

KM ELITE PRODUCTS  
**CATALOGUE**  
LEADING THE WAY



[www.kmeliteproducts.co.uk](http://www.kmeliteproducts.co.uk)

During the past year we have been expanding our team of brand ambassadors:



KM Elite Products have been manufacturing and distributing a wide range of high quality products for over 20 years.

We are proud to have a large, growing network of sponsored riders and Brand Ambassadors who proudly use our products.

Check our Facebook and Instagram page regularly to hear the latest news, competition results and also for our latest promotions.

Our Brand Ambassadors are from all disciplines; from racing to pony club, representing the broad range of products that we manufacture and sell.

  @kmeliteproducts

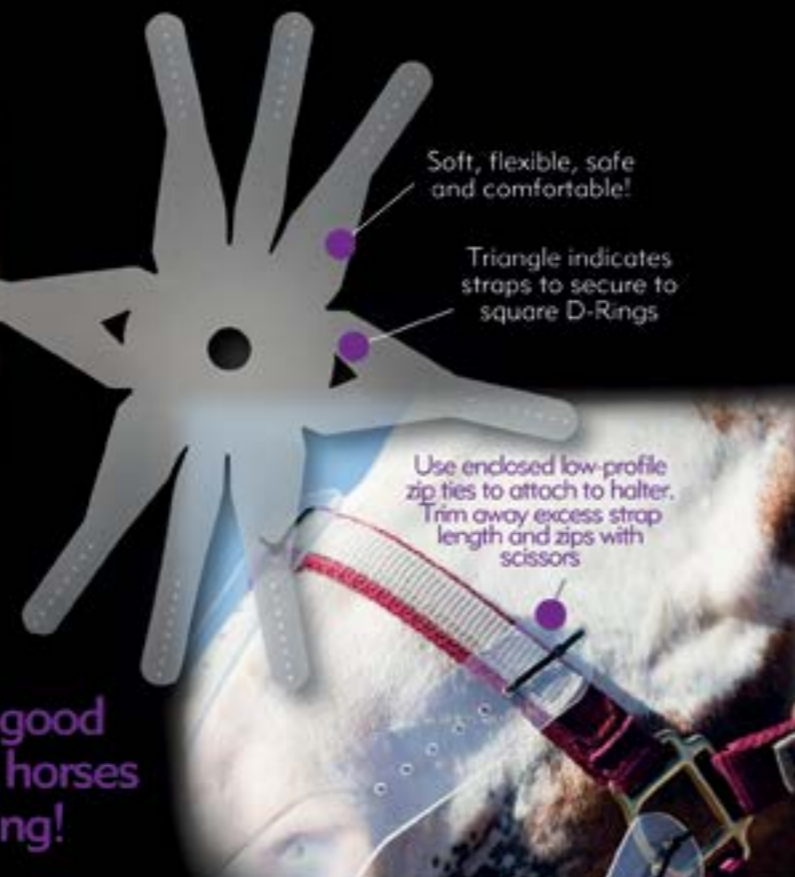
## CONTENTS

|                           |     |
|---------------------------|-----|
| Boots & Bandages          | 3   |
| Fly Protection            | 13  |
| Headcollars and Leadropes | 17  |
| Saddlecloths & Lambswool  | 21  |
| Thinline                  | 27  |
| First Aid                 | 33  |
| KM Elite Health Range     | 37  |
| K9 Elite Range            | 45  |
| Ultimate Poultry Range    | 51  |
| Grooming                  | 57  |
| Primera Leatherwork       | 75  |
| Stride Free               | 81  |
| Rider Essentials          | 91  |
| Stable & Yard             | 105 |
| Gatehouse                 | 117 |
| Point-Two Range           | 127 |





# THINLINE FLEXIBLE FILLY GRAZING MUZZLE



It's time to feel good about protecting horses from overeating!

## A soft, flexible, comfortable, effective and safe muzzle option!

This patent pending design allows horses to graze lightly or eat grain slowly while feeling free and comfortable. It's open system allows for maximum air flow. The soft material keeps teeth and equine lips free from hard surfaces. Its flexibility reduces the risk of horses getting "hung up" on anything. It is rated to break before your leather turnout halter.

Two sizes: Large: Fits horse to oversize, Medium: Fits pony to smaller horse size

Package contains Slow Feeder Muzzle and 10 zip ties to secure to your halter

1. Use the low profile zip ties to attach to halter. Trim away excess zips and straps with scissors
2. Can be used with a traditional turnout halter
3. Specifically designed to allow maximum air flow while limiting grazing and slowing speedy eaters
4. Flexible and more comfortable
5. Flexible muzzle material is rated to break just before your leather turnout halter
6. Keeps horses from feeling confined. Soft material prevents tooth wear and sores on lips and gums
7. Aids in minor cribbing problems!
8. Fitting: Attach with triangles to either side of the horse's face. This helps provide extra air flow



# BOOTS AND BANDAGES

## Pro-Mesh Boot Features



### Breathable

The Pro Mesh integrated layer is breathable and offers superior airflow, but stops sand and dirt passing through the outer layer avoiding rubbing and grazing.



### Protects, supports, flexible

Pro Mesh provides excellent impact and abrasion protection. It is designed to stretch slightly to allow movement in the joints offering outstanding comfort.



### Lightweight

The unique hexagonal holes reduce weight but offer strength, flexibility and air flow to cool and allow the legs to breathe.



### Water resistant

The Pro Mesh shell and comfort lining do not absorb water which can increase weight and may contribute to boots slipping.



### Durable

Extremely tough and tear resistant, our unique manufacturing process means no adhesives are used during production, increasing strength and durability.



### Comfort foam lining

Offers a glove-like fit, the naturally hypoallergenic polyolefin closed cell foam is perforated for air flow. Resists mould and bacteria growth, perfect for horses with sensitive skin.



### PEBAX Strike Guard

Our anatomically shaped, light-weight PEBAX strike guard offers exceptional protection as part of a multilayer design. The strike guard is rigid where needed but flexible enough to conform to the horses' legs. Holes in the strike guard allow heat to escape from the flexor tendon area.



## Pro-Mesh Event Boots

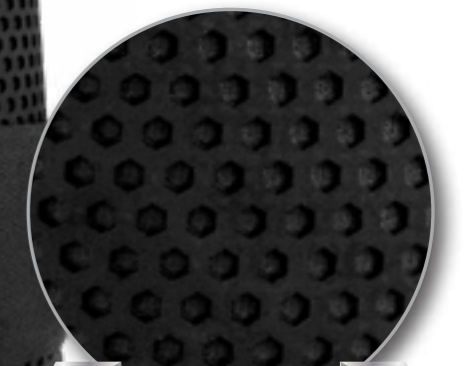
Our Pro Mesh Event boots have been designed to fit comfortably around all shapes and sizes of legs. They are super lightweight and fit like a glove. These versatile boots can be used for schooling, jumping, XC and polo. They are also ideal for hunting as they don't move, rub or slip and can be worn all day!\*

\*when tested by our riders.

Available in front and hind  
**Colour** Black/Black and Black/Electric Blue  
**Size** Medium, Large



WITH PEBAX STRIKE GUARD



BREATHABLE PRO-MESH MATERIAL

The Pro Mesh integrated layer is breathable and offers superior airflow, but stops sand and dirt passing through the outer layer avoiding rubbing and grazing.



## KM Elite Air Shock Tendon and Fetlock Boots

Innovative air cushion and extra thick strike areas absorb impact to protect the tendons and fetlocks

Durable, lightweight technology which helps performance

Dual hardness outer shell strike area to accommodate air cushions for ultimate protection

Vented Neoprene liner and outer shell to help air flow and provide an exit for heat to aid cooling

Double locking Velcro™ straps for extra security

Certified BASF®TPU German quality and conforms to FEI rules for young horses

One of the toughest, lightest tendon boots on the market today, KM Elite Air Shock boots are the first choice for many professional show jumpers. These high quality boots are made to competition standards at an affordable price for every rider. The blue areas illustrate air flow through special vents and the air cushion under the strike area.

Colour Black



IMPROVED VENTILATION

## Brushing Boot

Contrasting anti-slip foam lining

Reinforced strike guard

Variable flex Pro Mesh material

Fully breathable

Our new ultra lightweight hybrid boot is completely versatile and can be used for all disciplines: dressage, jumping, racing, polo and even turnout.

Colour Black/Electric Blue, White/Black

Size 2 Strap (Med) - 120 gr,

3 Strap (Large) - 160 gr



ULTRA LIGHTWEIGHT



“

*KM Elite's Brushing boots from the Pro Mesh Collection are high quality and durable, they are amazing for both competition and everyday use!*

*Not only do they fit like a glove but they are also super light, resistant and breathable.*

*Another real bonus is that you clean them under the tap and they dry in no time to use on your next horse.*

**Constantin and  
Therese Van Rjickvorsel**  
International Event Riders

## Ballistic No-Turn Over Reach Boot

Tough, durable, protective outer  
 Superior quality boot with shock absorbent lining  
 'No-turn' soft nodule to prevent spinning  
 Double locking Velcro™ for extra security  
 Machine washable at 30° - dry naturally

These tough, hard wearing boots are manufactured using a ballistic nylon material which creates an extremely tough, scratch resistant finish whilst maximizing protection for your horse.

Colour Black  
 Size S, M, L, XL

Ballistic Nylon



Pro-Mesh

## Pro-Mesh Over Reach Boot

Pro Mesh TPU protective outer layer  
 Tough rear strike guard, contoured to stay in place  
 Shock absorbent inner lining, double locking Velcro™  
 'No-turn' soft button to prevent spinning  
 Available with or without ultra soft 100% Merino Lambswool collar for extra comfort and protection  
 Machine washable at 30° - dry naturally

Colour White  
 Size M, L, XL



KM Elite Ezyloader  
 See page 20 for more information

## KM Polo Bandages

Highest quality Exercise/Fleece Polo Bandages

Soft, durable material for maximum support and protection

Ideal for all disciplines when travelling, exercising or at work

Shock resistant with even distribution of support

Strong Velcro fastening for extra security

Easy open tab

Colours Burgundy, Black, Hunter Green, Purple, Red, Royal Blue, Yellow, Pastel Blue

Size 350cm Long





### KM Elite Flexi-Cool Combi Bandage

Our brand new combination bandage combines two innovative fabrics allowing direct application onto the leg for maximum heat absorption and support without causing irritation. 50% breathable, cooling liner to help reduce heat whilst wicking away sweat. 50% open weave four-way stretch fabric for extra cushioning to protect without bulk or irritation.

Don't confuse these with cheaper combination bandages which have simple fleece inners! The liner fabric in our bandages is especially designed to support and protect while reducing heat build-up and avoiding any uneven pressure on the leg.

Fully washable, set of two.

Colour White  
Size 290cm Long

### Skid-Tech Polo Boot

- Strong and stretchy material
- Adjustable Velcro™ fasteners
- Provides ultimate flexibility and protection
- Ventilated Neoprene technology
- Reinforced cup for extra durability and strength
- Protects your horse from sliding and turning burns

Using a breathable, hard-wearing Neoprene, which moulds to the horse whilst allowing heat and moisture to escape, the boot keeps the horse cool and comfortable. Radius cut Velcro™ straps are easier to grip and stretch the boot to gain an optimum fit.

Size Standard 13.5" Tall



### GEL-EZE Under Bandage

For use in the stable, travelling and in competition. When chilled, the under bandage also acts as an instant cold compress for sore joints and tendons aiding recovery from strenuous exercise and hard ground trauma. Non Toxic. Washable. Reusable.



## FLY PROTECTION



## KM Elite Fly Mask

**NOW WITH 70% UV PROTECTION!!**

The most durable flymask on the market - can tolerate up to 130kg.

Double Locking elastic closure for extra security, which can be trimmed for a customised fit

Elastic insert across the poll keeps mask on the horse and positioned correctly

Made from a grey mesh with black trim

Following customer feedback we have improved our already popular Fly Mask to offer a closer fit using an elasticated insert across the head. This top selling product is designed to offer protection, comfort and durability at an affordable price.

**Style** Standard with ears (No Nose) & Long with Ears (With Nose)

**Size** Weanling (X Small), Yearling (Small), Cob/Arab (Medium), Horse/Full (Large), Warmblood (X Large)



2 STYLES AND 5 SIZES AVAILABLE



NEW STYLE!

## Space Mask with Detachable Nose

Made with flexible but durable materials and offers superior fly protection along with the following additional benefits:

An innovative spacious design to protect the eyes whilst ensuring an optimum fit and maximum visibility

Detachable nose piece with soft, comfortable fleece edging protects from UV and irritation from flying insects

Large roomy ears for a soft, comfortable fit, easily converts to an earless design by cutting above the stitched seam

Two robust Velcro™ straps, one double locking for extra security

Made from a grey mesh with black trim

Size S, M, L

## Fly Veils

Our high quality, stylish fly veil is made from a polyester yarn with stretchy cotton ears providing a great fit and comfort, while relieving your horse from flies. It is perfectly weighted so it won't move around, distract or cause rubbing. It is available in 5 smart colours to match and is suitable for all disciplines.

**Colour** Black/Purple, Royal Blue/Silver, Black/Electric Blue, White/Black, Navy/Silver

**Size** Small (Pony/Cob), Large (Full)



## Absorbine Ultra Shield

Technically advanced insecticide and repellent that gives ultimate protection for up to 14 days. Water-based formulation has 3 active ingredients and 2 sunscreens and scented with citronella.

946ml



REPELS FLIES



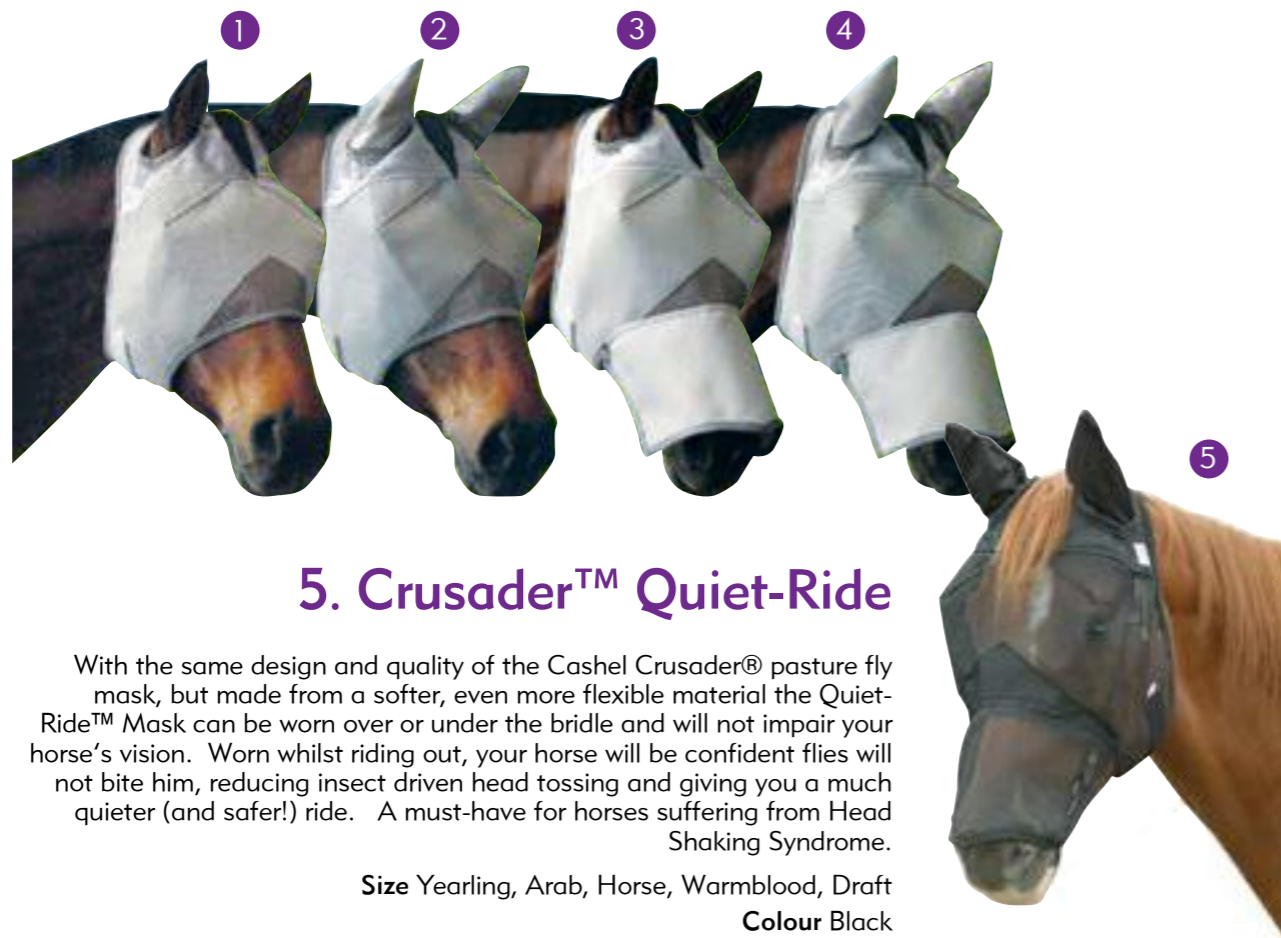
## Crusader™ Pasture Fly Mask 70% UV Protection



Cashel Fly masks discourage flies from landing on the nose and irritating your horse. Each fly mask is hand-made by Cashel. All have the unique three-hole cap for ears and forelock that provides stability and a great fit. The unique design of the eye darts keeps the mesh well away from the eyes. The plastic coated mesh is durable, blocks 70% of damaging UV rays and reduces symptoms of Head Shaking Syndrome.

1 Standard. 2 Standard with ears. 3 Long nose. 4 Long with ears.

Size Foal (miniature), Weanling (small pony), Yearling (large pony), Arab (cob), Horse, Warmblood, Draft  
Colour Grey



### 5. Crusader™ Quiet-Ride

With the same design and quality of the Cashel Crusader® pasture fly mask, but made from a softer, even more flexible material the Quiet-Ride™ Mask can be worn over or under the bridle and will not impair your horse's vision. Worn whilst riding out, your horse will be confident flies will not bite him, reducing insect driven head tossing and giving you a much quieter (and safer!) ride. A must-have for horses suffering from Head Shaking Syndrome.

Size Yearling, Arab, Horse, Warmblood, Draft  
Colour Black

### 6. Donkey Fly Mask

Size Yearling, Arab, Horse

### 7. Crusader™ Leg Guards

These durable mesh leg wraps eliminate sun and photosensitivity and prevent flies from biting the lower leg and pastern area, reducing insect induced stress and the stomping that damages hooves, bones and soft tissue. Contoured to fit, they incorporate a plastic stay that prevents sagging while soft vinyl trim eliminates burr and grass seed problems experienced by fleece lined leg wraps. The only leg wrap with elastic sewn to the Velcro closures, they provide an adjustable yet non-binding fit.

Size Mini, Small Pony, Pony, Arab, Horse, Warmblood, Draft.  
Set of 2.  
Colour Grey



# HEADCOLLARS AND LEADROPES

## KM Elite Luxury Padded Headcollar

**\*NEW IMPROVED\***

Unlike many other headcollars on the market, our KM Elite headcollar is made from the highest quality, heavy duty raw materials which offer unrivalled durability and strength as well as a much softer contact with your horse's head.

Our clips are stronger and heavier and all hardware is extra plated ensuring that it stays unblemished for longer.

Available in 17 vibrant colours which co-ordinate with many other items in the KM Elite range.

**XXXS (Shetland):** Black, Hot Pink, Navy Blue, Teal, Red, Purple

**XXS (Colt):** Black, Hot Pink, Navy Blue, Teal, Red, Purple

**XS (Small Pony):** Black, Hot Pink, Navy Blue, Teal, Red, Purple

**S (Large Pony), M (Cob), L (Full):** Baby Blue, Baby Pink, Black, Brown, Burgundy, Grey, Hot Green, Hot Orange, Hot Pink, Hunter Green, Navy Blue, Teal, Purple, Raspberry, Red, Royal Blue, Yellow

**XL:** Black, Navy Blue, Red



## KM Elite Poly Leadrope 6ft

Available in 17 colours to match our signature headcollars. These are also made from a heavier and denser weave rope and stronger brass clip. They make great mix and match items with our bungees, haynets, stall chains and more!!! See our Stable and Yard section.

**Colours** Baby Blue, Baby Pink, Black, Brown, Burgundy, Grey, Hunter Green, Hot Pink, Hot Orange, Hot Green, Navy Blue, Purple, Teal, Red, Royal Blue, Raspberry, Yellow

**Also available in 10ft** Red, Hunter Green, Royal Blue, Black, Burgundy, Navy Blue



LIMITED SPECIAL EDITION!

## Limited Edition Rainbow Headcollar and 6ft Poly Lead Rope Set

The latest addition to our luxury padded headcollar range!!

**Size** Shetland, Colt, Pony, Small, Medium, Large and XL



## KM Elite Cotton Double Braided 7ft Leadrope

**Available in 7ft and 10ft**

This high quality double braided round cotton lead rope offers luxurious comfort and is available in a range of colours with a brass plated swivel bolt snap.

**Colours** Black/White, Black/White/BabyBlue, Black/White/Baby Pink, Black/White/HotGreen, Black/White/Navy, Black/White/Orange, Black/White/Pastel Blue, Black/White/Purple, Black/White/Raspberry, Black/White/Red, Black/White/Yellow

**Solid colours now available in 7ft** Black, Navy Blue, Royal Blue

**And 10ft** Black & Navy Blue

## Super Fine 2M Cotton Lead Ropes

Our woven superfine cotton leadropes are perfect for everyday use around the yard. Available in a wide variety of colours to match your yard accessories.

**Colour** Black, Red, Royal Blue, Pastel Blue, Purple, Navy Blue, Hot Orange, Burgundy, Hot Green  
3 tone colours as below



## Padded Leather Headcollar

Our Primera leather headcollar have been designed with padding over the poll and noseband for comfort. They are made with premium quality leather and durability brass buckles, clips and attachments.

They are full adjustable with buckles on both sides of the headcollar and around the noseband.

**Colour** Havana, Black (white contrast stitching in Cob & Full)

**Size** Pony, Cob, Full



## Leather Webbing Headcollar

Our stylish headcollar has been made with the highest quality leather for comfort and durability. The leather compliments the platinum hardware perfectly.

It is shaped around the poll and the ears with an extra wide poll fitting filled with soft touch material to protect the poll if the horse should panic when travelling.

**Colour** Grey/London Tan Leather, Navy Blue/Black Leather  
**Size** M (Cob), L (Full), XL (X Full)

## KM Elite Ezyloader

The KM ELITE Ezyloader headcollar adaptor is an easy-to-use and firm but kind controller system to make loading easier with tricky horses.

It works by putting pressure over nose of the horse if they are to resist or pull back and immediately releases the pressure as soon as the pressure on the lead rope is dropped. It is also ideal for horses who need more control when being led and can be used in place of a chifney, stallion chain or bridle for leading.

See our website for more information and fitting instructions.



## Miracle Collar and Fleece Covers

The Miracle Collar stops cribbing humanely and effectively. Constructed from soft maize, the fleece adds cushioning and comfort to the collar.

Size S, M, L



## Cashel Foam Equine Ear Plugs

A pair of foam corks which fit safely in your horse's ears to aid in clipping, bathing and show ring use.

Colour Black

Size S, M, L, XL



## KM Elite Everyday Rope Halter

Our high quality everyday rope halter comes in two colour-ways: Black & Grey, Purple & Lilac



# SADDLECLOTHS AND LAMBSWOOL

## KM Elite High Wither Half Pad - Spine free

Made from 100% Merino Lambswool. The new clear spine which is swept up at the wither, relieves pressure on the spine and allows air to flow giving an optimum fit with a functional design. Can be used in conjunction with a saddle cloth.

**Colours** Black & Natural, White & Natural, Black & Black, Brown & Brown

**Size** S (16"-16½"), M (17"-17½"), L (up to 18")



Spine free

## Adaptor Pad

Our new adjustable saddle pad is made from the same 100% Merino Lambswool (which is tanned using no harmful chemicals) and our signature 100% cotton quilted fabric used for all of our Distinction range.

There are 6 exterior pockets to allow the rider to personalise the pad to suit their own saddle - 3 either side, front, middle and back providing maximum coverage and helping to relieve back problems on pressure points. The protective cushioning under the tree points doesn't compromise the fit of the saddle.

The shims can also be purchased separately if required.

(Medium to fit 17-17.5" saddle, Large to fit up to 18" saddle)

**Medium and Large** White/Natural

**Large** Black/Natural



Durable Impact Foam



## KM Elite High Wither Dressage Square

Available half lined or with front rolled edge

100% Merino Lambswool. Front rolled edge protects wither and allows saddle to fit snugly.

Signature reinforced girth protection area with double Velcro™ straps for easy fitting. Ideal everyday cotton numnah but smart enough for competition.

**Colour** Black & Natural, White & Natural  
**One size**

## KM Elite Close Contact Pad

Available half lined or with front rolled edge

100% Merino Lambswool.

**Colour** Black & Natural, White & Natural

**One size**



## KM Elite Half Lined Comfort Wither GP Numnah

Half lined with 100% Merino Lambswool.

**Colour** Black & Natural, White & Natural, Black & Black, Brown & Brown

**One size**

## Dressage Square

This high quality dressage square has been designed with a deep length to accommodate the longer flaps on your dressage saddle. This deluxe product includes new D-Ring velcro attachments for easy fitting (although this is not currently updated on the image).

**Colour** White, Black, Purple, Grey, Blue  
**Size** Medium (Pony/Cob), Large (Full)



*I use the KM Elite GP Square because of its unique shape, with the Sheepskin Half Pad to absorb maximum impact.*

**Jessie Drea**  
 Professional Showjumper  
 Rider of Cortaflex® Touchable



## Close Contact

Our Close Contact pad has been specially designed and shaped to fit forward cut saddles, it has a high wither wither cut to further improve the fit and reduce movement of the saddle cloth.

Made from our superior KM Elite quilted fabric. Velcro girth fastening & D-Ring Velcro attachments for easy fitting.

**Colour** White, Black, Mocha, Blue  
**Size** Medium (Pony/Cob), Large (Full)



## KM Elite Shaped Dressage Girth Sleeves

Brand new shaped girth sleeve offers a closer fit and 100% Merino Lambswool edges to protect from rubbing and chafing. KM Elite cotton quilting on the reverse with adjustable elastic and Velcro™ straps.

**Colours:** Black & Black,  
 Black & Natural  
**One size fits all**

## KM Elite Girth Sleeve

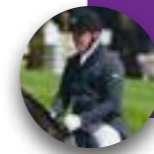
To maximise protection against sores and chafing.

**Colours** Black, Natural, Brown  
**Sizes** 60x12cm Dressage, 80x12cm GP



*I have been so impressed at the quality of the KM Elite saddle cloths and sheepskins. It is essential that my horses are turned out immaculately, particularly at shows. I use the white dressage squares, they fit well and do not slip. The high wither cut is perfect, it ensures the comfort of the horses and enables them to perform at their very best.*

**David Rumsey**  
 Dressage Rider



## KM Elite Multi-purpose Girth Sleeve with Cotton

Fully adjustable with Velcro™ closures to fit most styles of girth.

**Colours** Black & Natural  
**One size**

## Studguard Cover

**Colours** Black & Natural



WOOLSKIN WASH  
 ALSO AVAILABLE

## KM Elite Seat Saver

Streamlined shaping to fit securely on your saddle to give maximum comfort to the rider.

**Colours** Black, Natural, Brown. **Sizes:** up to 17.5" Medium, 17.5"+ Large



### 1. Head Stall Set

Four piece Lambswool sets. Velcro™ fastening.

Colours Black, Natural, Brown

### 2. Noseband Cover

Velcro™ fastening.

Colours Black, Natural, Brown

### 3. Grooming Mitts

Helps promote circulation. Cleans and polishes the skin. Double sided.

Colours Black, Natural, Baby Pink, Brown

### 4. Earplugs

A softer and more acceptable alternative for horses. Easy to insert. Can be trimmed to fit the ear.

Colours Brown. One size fits all

### 5. Breastplate Cover

Colours Natural



### Half Pad with Gel cushions

High quality half pad, fully lined with rolled edges and Gel-eze comfort cushions.

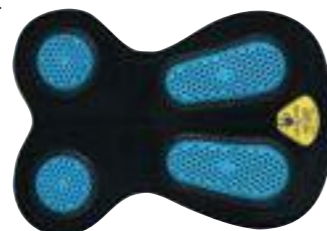
Size Small (14"-15" saddle), Medium (16"-17") and Large (17.5"-18.5")



### Gelee Fish™ Saddle Pad

The Gelee Fish™ pads are suitable where extra cushioning is required on the shoulder or wither.

Also available: Front Riser, Rear Riser



### Non Slip Saddle Impression Pad

Hi-tech impression pad, superb non-slip saddle pad, cushioned for extra comfort with Sympa® underneath and Gel-Eze™ Impression pad on top.



### Saddle and Wither Pads

Gel-Eze™ Saddle and Wither pads have the same impact absorbing properties as the Gel-Eze™ Under Bandage.



### Shaped Saddle Pad

Revolutionary hi-tech design to aid in spinal pressure relief and assist in grip and comfort.



### Non-Slip Pad

Anti-slip, slim, lightweight, impact absorbing properties to reduce the risk of back and wither injury. Perforations allow air flow.



THINLINE

**THINLINE®**



### ThinLine Perfect Fit Pad

The ThinLine Perfect Pad is the ultimate upgrade to our best-selling basic half pads. We've added a spine band, this creates a better wither and gullet clearance while keeping the shock-absorbing support right where it's needed.

Designed in both our famous Ultra ThinLine or ThinLine+ material, connected by a breathable, flexible mesh spine band.

Colours Black, White

### ThinLine Sheepskin Comfort Half Pad

Combining the benefit of a ThinLine over a high-quality quilted cotton half pad with luxurious merino wool sheepskin fully underneath. An excellent pad for horse's that need a little bit more from their half pad than a Basic ThinLine Pad.

**ThinLine over a high-quality quilted cotton half pad with luxurious merino wool sheepskin underneath.**

**Shimmable for customized saddle fit. Provides 95% shock absorption.**

**Back protection for both horse and rider.**

**Reduces rider movement, clearing the way for a closer, quieter communication.**

**Improves performance, allowing horses to lift their backs and move with more relaxation and suppleness.**

Colours Black, Dark Brown, Natural, White



### ThinLine Endurance Waxed Saddle Pad

ThinLine Endurance Waxed Saddle Pad is made of high-quality lambswool fleece lining against your horse. This great lining wicks moisture and adapts to temperature change, cool in the summer and warm in winter. Wool felt fill, topped with a waxed cotton-based fabric that sheds water completed with shock-absorbing ThinLine panels!

Colours Black, Dark Brown

### ThinLine Trifecta Half Pad With Sheepskin Rolls - New version

New and improved! The look of a sheepskin pad without the extra bulk. A high quality quilted cotton base pad and trimmed with luxurious sheepskin. Protects both the horse and rider's back. Spine free channel!

Colours Black, Dark Brown, Natural, White



### ThinLine Trifecta Cotton Half Pad - New version

More streamlined than ever! Creating a contoured wither profile and spine free channel, allowing the horse to work effectively through their back. Delivering the maximum in shock absorbency in the minimum thickness.

Colours Black, Dark Brown, White  
 Sizes Small (16.5"), Medium (17"-17.5"), Large (18"-19")

### ThinLine Dressage Saddle Pad

A great everyday saddle pad with very important wither clearance! Use the ThinLine Square Cotton Dressage Pad to solve your two pad slipping issues with this all in one saddle pad. The ThinLine provides all the shock absorption protection where you need it. Add to a heavy-duty quilted cotton saddle pad, creates a breathable durable saddle pad. This is a perfect pad to hold up to everyday riding and training.

**Very important wither clearance!**

**Ultimate protection for both your back and your horse's back (95% shock-absorbing)**

**Shimmable for fine-tuning saddle fit**

**Encourages horses to lift and engage through the back**

Colours Black, Navy, White







### ThinLine Endurance Dropped Rigging Saddle Pad

The innovative ThinLine Endurance Dropped Rigging Saddle Pad offers superior support, comfort, and durability compared to other saddle pads on the market. Widely used by endurance and competitive trail riders all over the world.

**Style** Cotton, Fleece Lined

### ThinLine Seat Saver

Experience the ThinLine magic for yourself! ThinLine Seat Saver will have you sitting closer, quieter, and more comfortable than ever. Perfect for riders with back pain, sitting fractures and riders spending many hours in the saddle!

**Colours** Black  
**Type** Dressage



### ThinLine Comfort Bareback Saddle Pad

Comfort / Antislip / Ultimate connection. Preferred by both horses and riders. This non-slip, breathable, shock-absorbing ThinLine coupled with the great suede look and the waffle-weave backing keeps you stable and happy. With extraordinary shock absorption for riders and horses, there will be no sore backs after time spent together.

**Colours** Black, Dark Brown



### ThinLine Flexible Breakaway Field Safe Headcollar

The ThinLine Flexible Breakaway Halter is designed for a very comfortable and secure fit. Know your horse is safe on the field with the Leather break-away piece which is adjustable at the crown. The halter intentionally does not have an adjustable noseband and you might feel the noseband is a little roomy but we designed this for the best in rub-free comfort!

**Sizes** Pony, Cob, Horse, Oversized, Medium Mini

### ThinLine Busy Buddy Horse Calmer

The ultimate horse calmer! Stops fretting, biting, kicking in the cross ties. The perfect clipping aid, grooming aid, farrier aid, equine vet aid, etc.



### ThinLine Standard Basic Half Pad

Looking for a very discrete half pad? ThinLine is endorsed by Veterinarians, even for severe back problems such as kissing spine. It is the #1 choice of Equine Chiropractors and Massage Therapists. Top choice of many great riders. English Basic Saddle Pads are Pure ThinLine performance foam. Designed to be used over your daily pad and under your saddle.

**Colours** Black, Dark Brown, White  
**Sizes** Medium (16"-17")



### ThinLine Bitless Noseband Bridle Converter

**An Instant Switch to Creating a Bitless Bridle**  
Simply take your English bridle or Western headstall and turn it into a side-pull bitless bridle! Soft and supple leather with ThinLine foam padding across pressure points creates the most comfortable bitless noseband on the market! Very easy to use by attaching on to existing cheekpieces.

**Colours** Black, Dark Brown  
**Sizes** Cob, Full



### ThinLine Adjustable Shims for all Pads

Saddle shims you can use in 5 different ways! Front, Bridging, Rear or a Full Shim AND Create EXTRA with freedom. You can maximize the impact protection, by adding a full one if you don't need to alter the saddle fit.

**Trim to fit**



### ThinLine English Reins Non-Slip Grip

We guarantee this rein will not slip even in wet and lathery situations. A favourite of show jumpers and dressage riders alike. Trail riders also cannot get enough of the comfortable feel. The ThinLine English reins are used worldwide for people with sore hands, small hands or arthritis!

Colours Black, Dark Brown



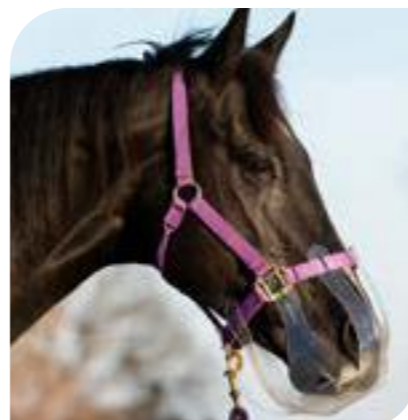
### ThinLine Seat Saver - Sitting bone & balance shims

ThinLine Seat Saver – Sitting bone shims. Relief the pain, and straighten the seat! With these shims you can shim our seatsavers to straighten the rider in the seat so both sitting bones are used.



### ThinLine Flexible Filly Grazing Muzzle

This Flexibly Filly grazing horse muzzle is unlike the typical heavy, hard, and "cage-like" apparatus of the past. We listened to horse owners just like you and designed this to be softer, lighter and less confining. Constructed of a durable and pliable material that radically improves comfort, it is also soft on equine teeth and lips. See page 2 for more information.



### ThinLine Ride Right Stirrup Wraps Non-slip knee relief

The Right Right Stirrup Wrap™ addresses equestrian knee problems AND offers riders a non-slip, shock-absorbent surface. Designed by a surgeon and avid rider taking advantage of the ThinLine shock absorbing abilities for rider comfort. You'll enjoy this more than you can imagine!

Riding Style English



### ThinLine Shoe Insoles

Find out why your horse loves ThinLine and have happier feet. Our shoe insoles are guaranteed to Relieve sore feet, sore backs, knee, ankle and hip pain! Gives you great comfort and beats all other insoles you ever knew!

Thickness Thin



### Non-slip Antimicrobial Yoga / Exercise Mat

ThinLine Non-slip Antimicrobial Yoga / Exercise Mat is the most revolutionary mat available! It has an exceptional cushion for hips and knees during floor poses. To all that it adds non-slip material to keep you centred, providing no tension grip! And even more! With antimicrobial additive, it prevents mould and mildew.



FIRST AID

# RenaSan

A revolution in animal care

RenaSan is the most effective first aid spray to use on all your animals, birds and reptiles. All RenaSan products contain the active ingredient Hypochlorous. Hypochlorous is produced naturally in all humans, animals and birds and is the substance the cells in our and our animals bodies use to fight infections and kill invading pathogens. Hypochlorous is not only one of the most effective known biocides capable of killing 99.9999% of all pathogens, but is also one of the safest and poses no risk to animals or humans. RenaSan products contain no alcohol, antibiotics, steroids or preservatives and are readily biodegradable and completely environmentally friendly.



RenaSan is the **ONLY** hypochlorous product on sale in the UK and Europe to be fully compliant with UK/EU regulations.

RenaSan Spray is available in the following sizes  
100ml, 250 and 5 litres

**EXCLUSIVE TO KM ELITE**  
750ml (in purple/black)  
100ml Gel  
60ml Eye Drops  
100ml Ear Drops



## Equine Anti-septic Spray

RenaSan Equine is a revolutionary, clinically proven antiseptic spray utilising hypochlorous, the super effective biocide found in all mammals. RenaSan is skin friendly, pH neutral, contains no alcohol, steroids preservatives or essential oils. Can safely be used in and around mouth, ears, nose and on sensitive areas.

## 1. Robinson Cotton Wool

Specially blended for softness and absorbency. The drawstring top pack will help to keep the roll clean whether used in stables, home or veterinary surgery.  
500g

## 2. Robinson Gamgee

Highly absorbent, hospital quality cotton woolenclosed in a non-woven cover. Soft, low-adherent medical grade wound interface minimises wound disruption and provides a fibre and particle barrier. The non-woven gamgee cushions and protects wounds from external trauma whilst providing a low adherent wound interface. Use as a primary wound dressing or apply over a dressing for added leg support and protection. Perfect for wound management, insulation, absorbency and to prevent bandaging pressure points. Veterinary gamgee is a useful addition to any equine first aid kit.  
Sizes 18", 12"  
500g



## Splintex

Silver: Formulated for use on fresh splints. Fresh splints may typically be up to 60 days after initial appearance. Total rest of the horse during treatment is very important. It should be applied very lightly and bandaged. 30ml Gold: Formulated for hardened splints and other indications such as curbs, spavins, thorough pins and windgalls. Requires no lay-ups, resting or bandaging and can be used without interruption during showing, conditioning and training. Will not irritate or blister. Applicator brush included.  
Silver 0ml  
Gold 60ml



## Ritchey Purple Spray

Ever popular Purple Spray offering effective disinfecting of cuts and grazes.  
500ml



## Absorbine Liniment

Veterinary Liniment speeds the natural process and brings instant warmth to overworked or strained muscles and joints by stimulating the flow of blood. It is also an antiseptic that helps prevent infection while healing minor cuts, bruises, abrasions, and relieving insect bites.  
950ml



### KM Elite Wrap

KM Elite Wrap tears easily by hand, will not tighten, does not stick to skin or hair and stays in place without adhesive.

**Colours** Black x 12, Blue x 12, Mixed x 12 - 2 rolls each of Black, Navy, Red, Pink, Orange, Neon Green



ALSO AVAILABLE AS SINGLE ROLLS



Emily Ward Hansen  
Dressage Rider  
#alwaysstridefree



# KM ELITE HEALTH RANGE

NOW WITH  
ADDED  
VITAMIN E!

3 OMEGA  
6 OMEGA  
7 OMEGA  
9 OMEGA

HEALTH RANGE



### Ultimate Oil

A perfectly blended high quality oil for the optimum health, appearance and well-being of your horse

Contains a sustainable source of essential oils of Coconut, Rice Bran, Flax Seed and Sea Buck

190+ bio-active nutrients and high ratios of Omegas 3, 6, 7 & 9

Formulated for all leisure and performance horses and ponies

Nourishes with essential fatty acids, minerals, antioxidants, and antibacterial nutrients

Now with added Vitamin E

May relieve itching and encourage hair growth

Sizes 1Ltr, 5Ltr & 25Ltr



*I've been using Ultimate Oil for several years now and am very pleased with it. I believe it provides my horses with many extra vitamins and nutrients required by training and this has manifested itself in improved performance and peak condition.*

Gary Moore  
Gary Moore Racing



### Flaxseed Oil

Flaxseed (Linseed) Oil is a high quality cold pressed oil, rich in Omega 3, 6 & 9. Benefits may include:

- Anti inflammatory properties
  - Improved coat quality and shine
  - A safe slow release energy source which may help with weight gain
- Sizes 1Ltr, 5Ltr, 25Ltr



3 OMEGA  
6 OMEGA  
9 OMEGA

### Cider Vinegar

Apple Cider Vinegar is unpasteurised, rich in minerals and trace elements. It is a natural tonic which:

Maintains vitality and coat condition  
Is believed to aid circulation and joint conditions

Sizes 1Ltr, 5Ltr, 25Ltr



### Aloe Vera Juice

KM Elite use only the highest grade inner leaf in their Juice from the Aloe Vera plant:

Can benefit your horse with naturally occurring antioxidants, vitamins, enzymes and nutrients

Ideal to use as a tonic for run down, recovering, lethargic or older horses

Sizes 1Ltr, 5Ltr, 25Ltr

### KM Elite Liquid Garlic

Super concentrated, 10 times more effective than other garlic products at repelling flies and insects that bite

Stimulates the appetite, supports respiratory health, maintains healthy blood pressure, contains antioxidants and assists the immune system

Up to 100 days' supply

Size 1Ltr



### KM Elite Garlic Granules

Strong variety of garlic, known for its beneficial and nutritional antioxidant properties

Effective at repelling flies and insects that bite

Stimulates the appetite, supports the respiratory and immune system, maintains healthy blood pressure

A rich source of Allicin, Sulphur, B Vitamins and essential oils

Sizes 1kg, 3kg



### Health Range 30ml and 25Ltr Pump

Easy to use pump and tap, to reduce spillage and wastage of oils. 30ml pump fits onto 5Ltr bottle.



## KM Elite Himalayan Salt Lick

Nutritional Analysis: Sodium 390mg/g, Calcium 0.23mg/g. 100% Pure Natural Himalayan Rock Salt. A source of essential vitamins and minerals.

1kg Small, 3kg Medium, 5kg Large  
(approximate sizes due to natural product)



## Ultimate Treats

A delicious handy size treat for rewarding your horse or pony. A complementary feed for equines, can be fed up to the equivalent of 40% of dietary dry matter.

Size 4kg



## Ultimate Oil Lick

The latest product to be launched in the KM Health Range - our Ultimate Oil Lick is a high-quality vitamin, mineral and trace element lick designed to support your horses' diet throughout the year.

A combination of essential vitamins, and minerals, (Vitamin E & Selenium are well known antioxidants) with Biotin & Zinc included too. Add to that our KME Ultimate Oil, a blend of high quality oils providing more than 190 bioactive nutrients.

It has been produced in accordance with the BETA NOPS assurance scheme, and the KM Elite Ultimate Oil Lick is legal under the rules of racing and other FEI affiliated competition.

Size 7.5kg



## Orchard Treats

These new apple and pear flavoured treats are great for a reward for your equine friend, and are palatable and smell delicious! They are also a good source of Omegas 3, 6 and 9.

Size 1.5kg



## Horslyx Original Balancer

Horslyx Original Balancer will balance any nutrient deficiencies in forage and grazing, helping to ensure your horse stays healthy and happy all year round.

When fed at the recommended intake level for your horse, Original Balancer can counteract nutrient deficiencies in grass and forage whilst also being cost effective and extremely low in starch. Feeding Original Balancer costs from just 47p per day when feeding a 15kg Horslyx Balancer at the recommended intakes for an average 500kg horse.

Size 650g, 5Kg, 15Kg, 40Kg (export only), 80Kg

## Horslyx Garlic Balancer

Horslyx Garlic Balancer contains pure garlic oil to help provide a natural and effective way to help combat the problem of biting insects.

Two independent research studies carried out at The University of Aberystwyth have shown that feeding Garlic Balancer can significantly reduce the irritation from flies and other biting insects whilst horses are at grass. The most recent report concluded: "This level of reduction is indicative that the consumption of Horslyx Garlic Balancer produces a beneficial effect for the horse and that this reduction in insect burden will allow the horse to be less irritable and more manageable".

Size 650g, 5Kg, 15Kg



## Horslyx Mint Balancer

Horslyx Mint Balancer will supply your horse with a balance of nutrients to keep him healthy, happy and performing at his best all year round with a cool refreshing peppermint flavour.

As with all Horslyx Balancers, Mint Balancer will promote a natural trickle feed pattern that allows the horse to self-regulate and consume Horslyx as and when he needs it.

This leads to better digestion, less stress and a happier, healthier horse.

Size 650g, 5Kg, 15Kg



## Horslyx Mobility Balancer

Horslyx Mobility Balancer can be used to help maintain healthy joints in all horses, of all ages and breeds, whether for a performance horse that requires support for hard working joints, or as an aid for older horses that may have suffered from wear and tear over the years.

Independent research was conducted at the University of Central Lancashire using 6 Thoroughbred horses based at the Thoroughbred Rehabilitation Centre. This independent university research clearly demonstrated that Mobility Balancer can help reduce joint stiffness in otherwise clinically sound horses and when used regularly will help maintain healthy supple joints and allow mobility and flexibility for comfortable movement.

Size 650g, 5Kg, 15Kg

## Horslyx Respiratory Balancer

All horses require a healthy respiratory system to ensure optimum performance. Horslyx Respiratory Balancer is an effective addition to the diet to help support all equines from the competition horse to the family pony.

Respiratory Balancer is designed to provide a two-pronged approach in supporting a healthy respiratory system. Ingredients such as menthol, eucalyptus and aniseed support the airways, meanwhile the high specification balancer package helps to maintain immunity.

Size 650g, 5Kg, 15Kg



## Horslyx Pro Digest Balancer

Horslyx Pro Digest Balancer contains a combination of ingredients to support the digestive system from the stomach to the hindgut while licking enhances saliva production which helps buffer stomach acidity. Slippery Elm and Seaweed Meal are included as a source of mucilage while a prebiotic supports beneficial gut bacteria and a live probiotic yeast helps provide a buffering action in the hindgut.

With increased magnesium levels and a low starch content Pro Digest Balancer is suitable for any horse but is especially aimed at those prone to digestive upsets.

Size 650g, 5Kg, 15Kg

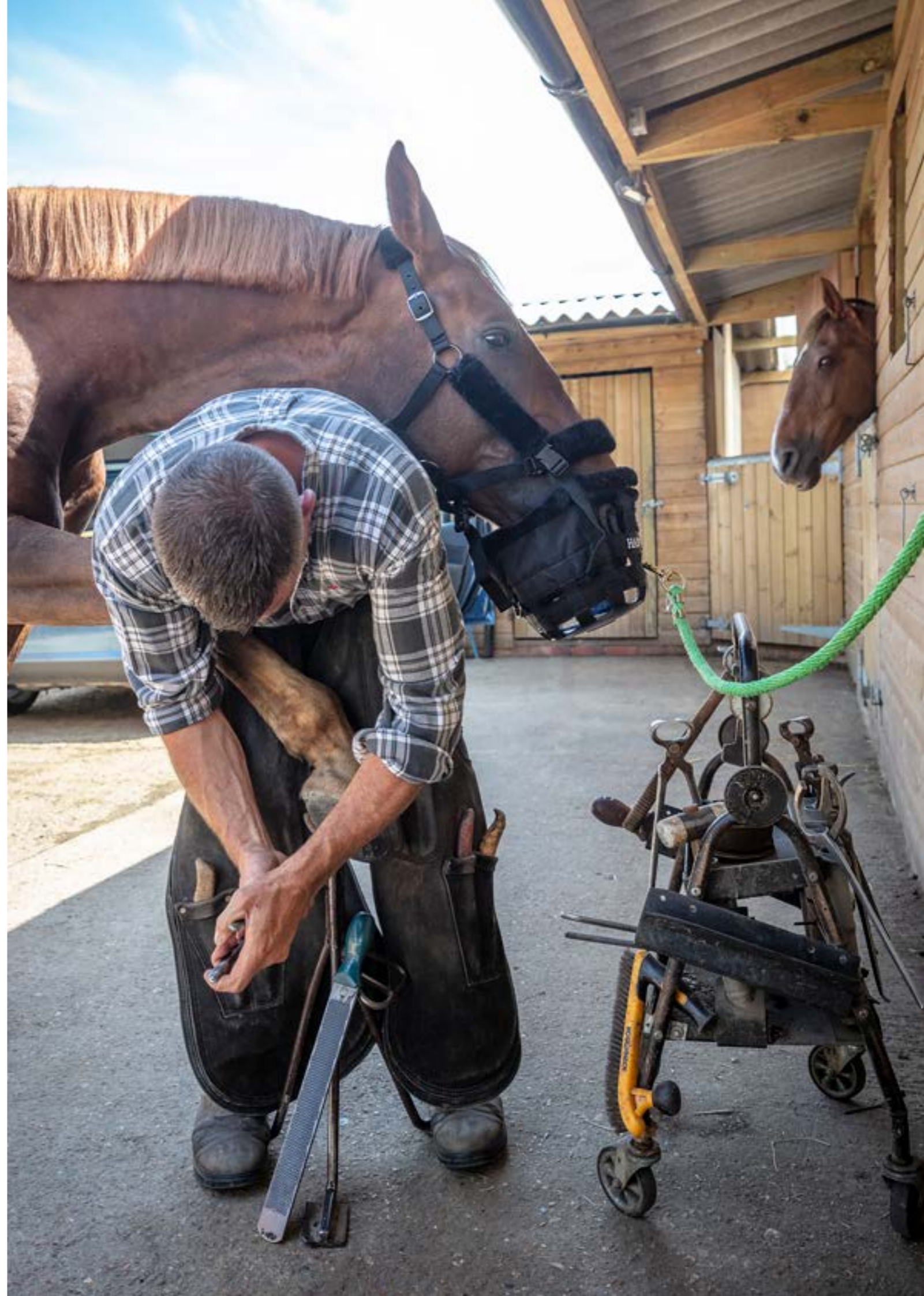


## Horslyx Smallholder Block

Smallholder Block offers great value for money as it is hard and concentrated and has to be licked, making it last a long time, and as a consequence is cost effective to use.

Smallholder block can be offered all year round providing essential vitamins, minerals and trace elements to all classes of grazing livestock along with additional energy and protein. Smallholder Block corrects nutrient deficiencies in all types of forage to ensure a balanced diet for all types of ruminant stock from a pygmy goat to a cow.

Size 5Kg, 15Kg





## Handsfree Handling

Handsfree Handling is the ultimate equine muzzle and headcollar combination that, with the use of a Horslyx Mini, diverts the attention of your horse or pony. This gives you the free use of your hands to do other tasks, lipping, pulling manes or tails or even having visits from your farrier or vet which are important tasks that can sometimes be difficult. Some horses and ponies are awkward to handle for a variety of reasons, some are scared, some are impatient and some are simply naughty. A common solution to help in these situations is to feed them or offer them something irresistible, like a lick, so they become completely absorbed and diverted. Patent Protected.



### Handsfree Handling Muzzle

Our muzzle is extra deep to allow a Horslyx Mini to sit comfortably at the bottom. The height of the muzzle can be adjusted when not being used with a lick, so can easily be turned into a grazing muzzle.

The muzzle is cut away at the back to help provide a comfortable fit and has soft fleece fitted around the top to help prevent rubbing.

Size Pony, Cob, Full, Extra Full



### Handsfree Handling Breakaway Headcollar

The headcollar can be adjusted both sides for an even, correct fit and is covered in soft fleece for comfort.

The patented feature of 3 quick release clips allow the muzzle to be quickly and easily removed or attached to the headcollar. It also benefits from a leather breakaway strap which allows it to be worn safely in the field.

Size Cob, Pony, Full, Extra Full

You can mix and match all the headcollar and muzzle sizes to achieve a good fit. i.e. full size headcollar with cob muzzle or cob headcollar and extra full muzzle etc.



# K9 ELITE RANGE





## KM Elite Argentinian Dog Lead and Collars

### The Petworth Collection

An exciting new addition to the KM Elite range comes in the form of Dog Collars and Dog Leads! Using the popular Argentinian Polo Belt design and high quality leather, these make the perfect addition for you pet accessory range!

**Leads Width** Wide (2.5cm), Narrow (1.9cm)

**Collars Size** XS, S, M, L

**Colour** Traditional, Admiral, Pastel

**Product Care** The leather should be nourished with a good leather conditioner every so often. Try to keep your product dry. If it does get wet, just blot with a towel and let air dry. Do not machine wash.



'These sturdy, durable leads and collars are comfortable and strong enough for my husky that likes to pull. People comment on how smart he looks!'



## Strip Hair Gentle Groomer for your Pet

Easy to use coat conditioning and hair removal tool.

The unique all-in-one design offers convenient, multipurpose functionality to groom, shed, curry, shampoo, slick, shine and massage all areas of the body—comfortably. StripHair will remove loose hair, dirt and dander while adding shine to the coat and warming the muscles.

StripHair Gentle Groomer SENSITIVE is recommended for all animals, but especially for pets with trust or aging issues.

Extra flexible and soft for grooming the face and legs.



Soft Cleaning Diamonds



The Gentle Grooming Edge



- BRISTLE & BLADE-FREE DESIGN**  
Therapeutic benefits for all animals. Ideal for short to medium coats.
- SOFT CLEANING DIAMONDS**  
Small - shed and clean face and legs. Large - shed and clean coat, add shine. Leather shampoo, massage, relax.
- GENTLE GROOMING EDGE**  
Shed and clean coat, add shine, distribute skin's oil, scrape water, massage, relax.
- SUPER FLEXIBLE & SOFT**  
Contours comfortably and safe to use everywhere on the body.
- CLEAN & SANITARY**  
No place for hair and dirt to collect. Will never grow or harbor bacteria or fungus.

Equestrian Version Also Available



## Ultimate Oil

A blend of high quality oils which provide more than 190 bio-active nutrients including healthy ratios of Omega 3, 6, 9 and rare Omega 7. It is perfectly blended for the optimum health, appearance and well-being of your dog. K9 Ultimate Oil has an effective immune boosting formula, with the added benefit of soft-tissue healing.  
**Size 500ml, 1L**



## K9 Turmeric Vitality

Used to give support to joints, skin, digestion and the liver. K9 Elite's Turmeric is ready to use and fully balanced, it contains ingredients to help with maximum absorption. The active ingredient in turmeric is curcumin, it is a specific phytochemical and is known for it's effectiveness as:

- Anti-Inflammatory**
- Liver Detoxifier**
- Antioxidant**
- Size 450g**



“ K9 Elite products are fantastic. Toby has always had tummy problems, and since he has been taking Turmeric Vitality he is barely ever having issues anymore! They have given him an extra spring in his step and I've noticed such an improvement in him!

**Jess Martin**  
 Owner of Toby, K9 Elite's sponsored dog



“ After having struggled for several years with my horses back with his muscle wastage on the right side and numerous saddles, I heard about Stride Free. I listened to the different way Stride Free saddles are designed and decided it might suit my horse. After booking a fitting I have never looked back.  
 One word... AMAZING!  
 I purchased a Stride Free jump saddle and can't believe the change in Timmy. It has had amazing results. It has allowed my horses muscles to develop evenly under the saddle and no restrictions in his shoulders when jumping. I have since purchased a SF Kitzbühel dressage saddle too and now my flatwork has improved so much he is so relaxed, with the flexibility in the tree I can now ask more from my horse knowing he feels free.  
 I find horses are like a jigsaw puzzle and Stride Free saddles were the missing piece.

**Tash Brooker**  
 Event Rider  
 #alwaysstridefree



## Canine - Feline Cortaflex Capsules

Hard working and active dogs endure tremendous stress to the connective tissues of the body.

Over a lifetime, a dog may expect to become less mobile as the body's regenerative mechanisms become less effective, potentially losing some of the early vigour of life.

This is where Inflammex comes in to play. Legendary in status and loved by users, Inflammex is a liquid herbal blend supportive of maximum mobility, suitable for dogs of all ages and breeds.

Inflammex contains the highest potency anti-inflammatory herbal extracts: Boswellia Serrata, Althaea Officinalis and Yucca Extract. These antioxidants are incredibly well researched, each with specific health properties. Of particular note, Inflammex has now been enhanced with the most potent source of boswellia found anywhere in the world - AquaLOX.

**60 capsules** Large Dogs 2 per day, Small Dogs 1 per day

## Canine Cortaflex Working Dog Powder

When only the best will do, Cortaflex Working Dog performs on another level. World class ingredients come together in an optimally dosed formula for the best joint mobility and comfort support anywhere in the world today.

Built on the solid foundations of glucosamine, chondroitin and hyaluronic acid for joint structure and lubrication, Cortaflex Working Dog includes a unique and highly specialised native type II collagen (b-2Cool®) that invokes an intelligent immune-mediated mechanism to prevent connective tissue degradation.

**90g**



## Canine - INFLAMEX Solution

Your pet has never been in better hands. We've combined the most essential ingredients at the highest grades possible, all packed into sprinkle capsules so you can subtly mix into meals. Premium grade materials, Turmeric Extract (95% Curcumin), Boswellia Serrata Extract (65% Boswellic Acid), Vitamin C and BioPerine® (Black Pepper Extract) have been added to what is already a highly advanced Glucosamine Complex. It's easy, sprinkle and mix the contents of the capsules into your pet's meal according to their breed and size.

**500ml**



# ULTIMATE POULTRY RANGE



## Ultimate Poultry Oil

KM Elite Ultimate Poultry Oil is the next generation in oil supplementation, a blend of high quality oils providing more than 190 bioactive nutrients including the correct healthy ratios of Omegas 3, 6, 9 and rare Omega 7.

Size 500ml



SEA BUCK ROSEMARY WHEATGERM COCONUT RICE BRAN FLAX SEED

## Ultimate Poultry Tonic

KM Elite Ultimate Poultry Tonic is a complimentary poultry drink which contains a unique blend of essential vitamins and plant extracts to support optimum health, growth & development in poultry. The combination of plant extracts offer support to the liver, respiratory system and immune system, ensuring birds remain healthy, especially important for free range chickens exposed to a wide range of external challenges.

Size 500ml



ROSEMARY GINGER MILK THISTLE OREGANO



## Ultimate Cider Vinegar Plus

Traditionally renowned for its health giving properties Ultimate Cider Vinegar Plus is a natural source of potassium, sodium, iron, boron, magnesium and calcium. Naturally maintaining overall health & well-being. Garlic stimulates the appetite, supports respiratory health, helps to maintain healthy blood pressure, contains natural antioxidants (allicetoin) and maintains a healthy immune system.

Size 1L



APPLE GARLIC

## Ultimate Forage Treat

KM Elite Ultimate Forage Treat contains both prebiotics & probiotics with a blend of natural herbs, grains and plant extracts to compliment a balanced diet. Additional layers pellets included to promote palatability and year round healthy hens.

Size 750g



PRE AND PROBIOTICS SUNFLOWER SEEDS OATS OYSTER SHELL OREGANO WHEAT



## Ultimate Seaweed

KM Elite Ultimate Seaweed is harvested from the coast of Scotland. A naturally coarse material containing minerals, vitamins and trace elements. Seaweed supports your hens immune system and aids their antioxidant abilities. Ultimate Seaweed may also have beneficial impact on the quality of the eggs produced whilst maintaining condition.

Size 500g



SCOTTISH SEAWEED

## Ultimate Free Range Boost

KM Elite Ultimate Free Range Boost contains key minerals, plant extracts, amino acids & fatty acids to ensure correct egg development & productivity as well as supporting overall health & immunity. An ideal supplement for the free range chicken, and in particular ex battery hens who may have had increased stress in previous habitats. Essential minerals support correct growth, also making this suitable for younger birds.

Size 500g



GINGER FLAXSEED OREGANO TURMERIC





## Ultimate Mitey Xtra

KM Elite Ultimate Mitey Xtra feed supplement contains aromatic plant extracts along with a blend of powerful herbs to support poultry following exposure to common environmental challenges. These specially selected ingredients help support the circulation and immunity of the bird, maintaining optimum health at all times. Nor-Mite is Ideal for use where the external living area may be compromised.

Size 100g



## Red Mite Control Paint

Red Mite Control Paint offers effective mite control for use within the coop. A highly effective preparation for applying directly to the internal surfaces of the coop to eradicate red mites and other nuisance insects.

The application physically seals in any existing insects, stopping them from reproducing or irritating your flock. Therefore, breaking the life cycle of the mite.

Ideal for use where the external structural living area or roosts may be compromised.

Use prior to, or immediately when the structural environment may have become compromised and there is a risk that the poultry may be exposed to red mite.

Size 1L



## KM Elite – Ultimate Mitey Xtra

KM Elite Ultimate Mitey Powder contains aromatic plant extracts of clove & lemongrass, along with a blend of powerful herbs to support poultry following exposure to common environmental challenges.

These specially selected ingredients help support the circulation and immunity of the bird, maintaining optimum health. Ideal for use where the external living area may be compromised.

Size 100g



**sold as a PACK**  
 buy the paint and  
 get a Mitey Xtra  
**FREE!**  
 (Value £14.00)



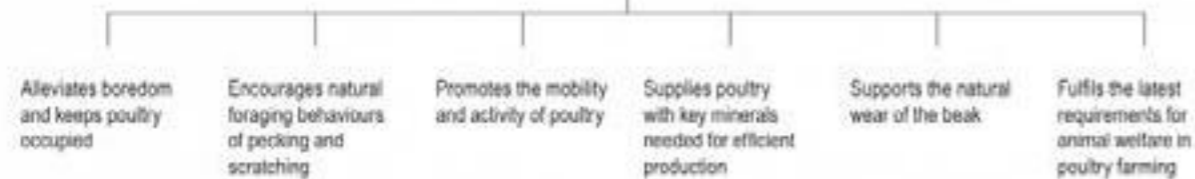
## Pickblock Longlife 5kg

PICKBLOCK is the latest innovation in environmental enrichment for poultry. It supports the natural behavior of rearing laying hens, broilers and turkeys. Produced using high quality cereals and minerals PICKBLOCK offers poultry a destructible and ingestible form of stimulation that effectively limits abnormal behavior such as feather pecking and cannibalism.

Manufactured under pressure and without the need for chemical hardening agents, the compact firm structure of PICKBLOCK ensures optimum, sustainable pre-occupation of poultry.

The hole in the middle makes the 5 kg PICKBLOCK very handy. It can be easily hung up or fixed in place. The hard, durable strength of PICKBLOCK ensures that poultry often consume small amounts, resulting in low consistent intakes. The fibrous fine and coarse components (including cereal grains) create a strong visual appeal for the poultry. No chemical binders are used to cure the products

Daily intakes are consistent at a maximum of 3 g per head/day.



All PICKBLOCK products are certified as poultry feed (GMP+ FSA secured). An HACCP concept is integrated into the good manufacturing practice. This ensures that all PICKBLOCK products are regularly tested for undesirable substances (including dioxin, heavy metals, etc.). In addition, active monitoring is carried out in accordance with paragraph 2 (2) of the Poultry Salmonella regulation.



## GROOMING



The Smart Grooming brand of equestrian grooming products was established in 2006, winning "Best Product of the Year" with their initial product, Smart Tails at the Equestrian Business of the Year Trade Show. This product has proved hugely successful over the years and was the inspiration for building the brand based on products that really work.

## Trimming and Tidying

Humane trimming, thinning and tidying products that are designed for ease of use and best results

Products include: Smart Tails - Professional, Standard and Yellow handle Smart Manes, Combs, Knives and Shavers

A wide range of curved, straight, trimming and thinning scissors, shedding and clipping essentials.



## Borstiq Brushes and Grooming Sets

Borstiq brushes are a top quality range of natural fibre, eco-friendly brushes from Sweden.

Returning to the more traditional brush but with ergonomic designs, these high quality brushes are easy to hold and use too.



Including various ergonomically shaped brushes, grooming and finishing tools. Goat hair brushes, hoof picks, curry comb and sweat scraper. Several kits also available - Natural Grooming, Extra Shine, Everyday Care.

## Hoof Care

Hoof Shine - Black and Natural

Hoof Oil Brushes

Borstiq Hoof Brush and Stubby Hoof Pick



## Turnout

Whitening products and stain removal

Purple Shampoo

Blue Whitening Rinse

Touch Up Sprays

Cover Up - White and Black



THE FULL RANGE OF SMARTGROOMING PRODUCTS ARE AVAILABLE ON OUR WEBSITE!

## Stain Removal Set

The perfect whitening, brightening and stain removal set includes:

- Polar White Stain Remover Spray
- Deep Purple Whitening Shampoo
- Super Groomer



## Shampoos and Conditioners

Lavender Shampoo and Wash

Super Groomer

Sweat Scraper

Handy Towel

Dry Off Towel

Peppermint Shampoo and Wash





## Plaiting and Quartermarking

Everything you need for perfect plaits. Thoroughly tried and tested for maximum hold, control and ease of plaiting, for even the most unruly of manes.

Plaiting Wax, Perfect Plaits Spray, Apron, Comb and rippers, Quick Unpick, Silicone Bands x 500, Super Thick Bands x 50 grams, Silicone Bands Tub x 450, Flat Wax - Small/ Large in 7 colours, Blunt Needles, Mane Combs, Also available in various sets.



Quarter Marking Combs  
Velcro Brush  
Stencils and Spray also available



## Natural Skincare

Lip and Bit Balm  
Itch Soothe Balm



## Borstiq Brooms

Made by the Borstiq farm in Sweden, the Borstiq brooms are light to hold and easy to use. Suitable for all yard surfaces and conditions. Farmers Broom and Bassine Broom







### Borstiq Brush Range

The Borstiq range includes beautifully shaped, quality brushes made in Sweden, ergonomically designed for ease of use and extremely light to hold.

## Borstiq Banana Brushes

Wooden backed. The Banana Brush is available in a choice of 3 bristle options:

**Bassine natural brushes for the Dandy brush**

**Polypropylene bristles for the Medium finish**

**The softest horse hair bristles for the Finishing brush**



## Borstiq Banana Brush Kit

**Banana: Fine, Medium, Dandy Medium Ergo Hair/Massage Brush**

**Hoof Pick with Stud Spanner Hessian Bag**



## Medium Ergo Hair/Massage Brush

Made from hardwood with ergo shaped handle and wooden pegs for bristles. Great for massage and on manes and tails. Also suitable for grooming cats and dogs.



## Borstiq Natural Body Brush with Leather Strap

A proper body brush densely packed with natural horse hair bristles with a solid beech wood top and fixed leather strap.



## Small Body Brush

Made from two types of natural horse hair bristle, but small in size for children or as a handy brush for using around the head.



## Large Mane/Tail Massage Brush

This large paddle type brush is made from hardwood with 'wooden' pegs. This is a great multi-use brush for both massaging the coat and for manes and tails. Comes with a hessian strap on the back and a leather loop for hanging the brush. Antistatic function.



## Goat Hair Brush

These brushes are made from the softest goat's hair – a quality brush that your horse will love. Use as an overall finishing brush. Available in Medium and Large. Webbing-strap to make it comfortable to hold. A fantastic brush for professional horse care and for final finish.

Sizes: S, M, L



## Mex Fibre Flick Brush

A multipurpose brush with 50mm long Mexican fibre, allowing deep grooming. Shaped for ease of use. Firm natural bristles.



## Hoof/Bucket Scrub Brush

Ideal for naturally kept horses. Made from bassine, a naturally coarse fibre, this brush is tough and great for using on dirty feet and perfect for scrubbing out buckets. It also has a leather loop for hanging the brush.



## Stubby Hoof Pick Brush

Ideal for applying hoof oil or cleaning your clippers.



## Metal Curry Comb

The traditional, original curry comb is back! So easy to use when cleaning off body brushes.



## Absorbine Hoof Shine

Gives your horse's hooves a magnificent mirror-like finish and dries in less than 60 seconds.

Colours Black, Clear



## KM Elite Luxury Tack Sponge

A handy sized sponge ideal for removing the dirt from your tack and for applying conditioners and soaps to your leather and saddlery.

- High density
- Great access to the fiddly bits
- Easy to use
- The perfect sponge for kids shampooing their ponies

Quantity Pack of 10, 20, 50, 100+10 free!



## KM Elite Yellow Sponge

The perfect sponge for grooming of your horse.

- High quality everyday sponge
- Many uses around the yard and stables
- Easy to use
- Perfect for grooming
- Great for general cleaning of the horse
- Good absorption
- Dimensions 15cm x 10cm x 5.6cm

Quantity Single, Pack of 25+5 tack sponges FOC, 50+15 tack sponges FOC, 100+35 tack sponges FOC





Smart Tails Grooming range is made up of high quality grooming and trimming products to give your horse the professional competition finish! The trimming products are available in a range of different size and width for different hair types and different areas of the horse. We stock the full range including the replacement blades.

## 1. Smart Tails Standard

The standard range is a plastic handled tool with a fixed blade. This is a disposable product and tidies 10-20 tails depending on how much needs to be done. These blades cannot be re-sharpened. A full tail can be transformed to a 'pulled' tail ready for the show ring in minutes.

**Fine, Medium, Coarse**

## 2. Equi-Shave

Ideal for last minute tidying around your horse's muzzle to take away whiskers and fine hair. Being slightly flexible they bend around the contours of the face. Disposable Scandinavian steel.

Single, Boxes of 50

## 3. Smart Tails Professional

The Professional range has a wooden handle and a replaceable blade system with a nut and screw on the side of the head to allow the blade to be replaced when blunt, or interchanged with another grade of blade if required.

**Superfine, Fine, Medium, Coarse**

## 4. Smart Tails Easi Grip

The Easi Grip yellow handle range takes the same blades as the Professional Range but is finished with a plastic handle making the end price more competitive. For use on horses or pets.

Spare blades available: **Superfine, Fine, Medium, Coarse**

## 5. Smart Tails Replacement Blades

**Superfine** are used mostly for finishing small show ponies or animals with small docks and very fine hair.

**Fine** blades are mostly used on tidy or fine hair. Great for really thick tails when a show or close finish is needed.

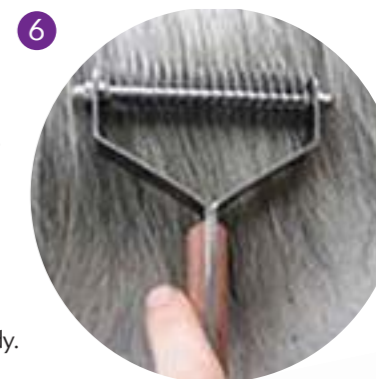
**Medium** blades are good for the average type of mane, tail or coat, medium to soft hair.

**Coarse** blades are for thick full tails, manes and thick coats. Will process a large amount of thick hair easily and efficiently leaving a tidy looking finish.



## 6. Smart Manes

Using the same principle as the Smart Tails rakes, these have a slightly wider blade width of 3" and are brilliant on thick unruly manes, especially on natives and horses which are not going to be plaited. Takes replacement blades and is interchangeable. Choice of two blades: Course-Medium, Medium-Fine



## 7. Smart Coats

Using the same principle as Smart Manes, these have a wider blade width of 5". Brilliant for removing the winter undercoat. Takes replacement blades and is interchangeable. They do not give a smooth clipped finish but do leave the coat tidy. Choice of 2 blades: Course, Fine.

## 8. Curved Trimming Scissors

## 9. Double Leg Thinning Scissors

## 10. Curved Fetlock Scissors

## 11. Quick Unpick

Makes un-plaiting easy. Ensures the mane doesn't get cut whilst removing plaits.

## 12. Quarter Marking Comb

Fine metal comb with plastic handle. Perfect size for quarter marking.

## 13. Velcro™ Cleaner

A Handy tool for cleaning hairs and rubbish from your Velcro fastenings.

## 14. Smart Grooming Folding Thinning Knife

Our super smart folding levelling and thinning knife is a neat addition to any grooming kit and is handy to fold away. So easy to use and gives a pulled look without giving any discomfort, ideal for manes, tails and feathers.

## 15. Clipperssharp Fine Clipping Oil

This fine clipping oil is made with bactericide to help prevent cross infection. A gentle lavender scent provided by essential oils gives this clipping oil a pleasant aroma. Suitable for use with dogs, cats, horses and particularly animals with sensitive skin.

Suitable to use with all makes of clipper and blades. 250ml



MORE SCISSORS AVAILABLE ON OUR WEBSITE!



## KM Elite Soft Gel Mane and Tail Brushes and Hoof Picks

A specially designed comfortable handle and face lets you wash your horse's mane and tail, and pick feet out, with ease.

Colours Grey



## Plaiting Bands

Eliminates tangles, pulling and split ends. .Silicon.

Pack sizes and colour vary according to availability . Check website for latest products.



## SoloRake

A unique, double headed grooming rake. As you comb a pet's coat, horse's mane or tail, the rake easily removes hair. They are ideal for shaping, finishing, thinning and creating a hand stripped look.



## Tubtrug Hoof Pick

Non-slip safety grip with integrated brush. Long lasting strong metal pick and hook hole in handle.

Box of 18

Colours Blue, Green, Pink, Purple, Red, Yellow

Subject to stock



## Orvus Paste

Orvus Paste is a neutral synthetic shampoo and extremely gentle detergent used to clean cattle and horses.



## SoloComb III

Designed to allow you to trim and tidy your horses mane and tail without the need for painful pulling. Durable design – simple to use!



## Magic Brush

A virtually indestructible, multi-purpose brush for horse or dog grooming. Great for cleaning hooves, bodies, shoes and sensitive areas. Easy to wash.

Packs of 3 brushes

Each brush is 16 x 6 x 3cm

Colours change frequently subject to stock



## SoloBrush

Brush your horse, twist when brush is full and the hair will drop from brush. Twist back again and begin brushing. Hygienic, adjustable, durable and easy to use.



## SoloKit

Solokit uses a clip-on holster and contains:

SoloComb  
SoloRake  
SoloBrush



SOLE UK  
DISTRIBUTOR

*StripHair*  
GENTLE GROOMER.



## The Original Multi-Purpose Gentle Grooming Tool

This award winning product offers optimal coat conditioning and is intended for daily grooming... all year long! Formulated with natural tree rubber, orange oil and anti-microbial agents means it stays clean and effective and is made to last a lifetime!!!

The unique all-in-one design offers unlimited convenience to **groom, curry comb, shine, shed, shampoo, massage** and can be used anywhere, including the legs and face. One single tool can be used in place of a handful of traditional grooming and cleaning tools.

Available for Horses (Black), Dogs and Cats (Red).



The gentle grooming edge should always be used at a 45° angle for maximum benefits when removing loose hair, dirt and dander.

Your animal will love the massage action which stimulates blood flow for healthier skin and distributes the skin's natural oils for a softer, shinier coat.



Made with anti-microbial agents and natural orange and olive oil, increasing durability, performance and benefit.





## Quic

- Quic Braid:** Mane and tail control spray. 946ml, Refill 64oz
- Quic Black:** Colour intensifying shampoo for black horses. 946ml, Refill 64oz
- Quic Silver:** Colour Intensifying Shampoo for Greys. 946ml, Refill 64oz
- Quic Color:** Colour intensifying shampoo for chestnuts, bays and brown horses. 946ml, Refill 64oz

## Absorbine Show Sheen

This non-sticky formula keeps manes and tails tangle-free and can last a full week with one application. Not an oil or cream rinse. Patented silicone formula. Reduces static electricity. Repels dust & dirt. Non-toxic. Spray or refill available.  
**946ml, 3.8Ltr**



## KM Elite Champion Bay

A professional concealer used to cover marks, last minute stains, scars and stray hairs, or to add definition to legs. To use, spray directly on to the coat or apply using a soft cloth, allow to dry for a few seconds, then brush off any excess. Champion Black, Champion Bay and Champion White dry to a matt finish. When dry, to enhance the shine on the body, sparingly apply a top coat of Champion Sparkle & Shine.

**The ultimate showing and whitening products**  
**Ideal for last minute show touch ups**  
**Covers blemishes, marks, scars, stains and stray hairs**  
**Champion Black and Champion Bay add definition to dark legs**



## KM Elite Champion Highlighter

A clear facial highlighter which illuminates, enhances and defines eyes, muzzle and bone structure giving the finishing touch to show ring turnout. Creates an eye catching glister and glimmer. A little goes a long way.  
**Accents eyes and muzzle, highlights facial bone structure**  
**Contains sunscreen**



"Only 'Ultimate' products will do for the ultimate show horse... Vivacious, Two Time British National Champion and 2017 International Champion!"





Shapley's has been trading for over 75 years, and generations of Equestrians around the world have placed their trust in their grooming products. Shapley's offer an extensive range all made in the United States, starting with their very first product – Original M-T-G. We at The Mane Hub invite and encourage you to experience why so many horse lovers.



### Original M-T-G

Recommended for fungus, rain scald, girth itch, mud fever, sweet itch, tail rubbing, dry skin, bug bites, girth gall, mane & tail detangling, conditioning growth of hair up to 3" a month.

Irish Equine Center approved. Recommended by veterinarians and horse professionals worldwide.



### Original M-T-G Plus

Recommended for fungus, rain scald, girth itch, mud fever, sweet itch, tail rubbing, dry skin, bug bites, girth gall, mane & tail detangling, conditioning growth of hair up to 3" a month

NO ODOUR ONCE DRY!  
Irish Equine Center approved. Recommended by veterinarians and horse professionals worldwide



### Medi-Care

Blend of tea tree and lemongrass oils creates a natural anti-bacterial, anti-fungal medicated shampoo, promotes healing of: rain scald, mud fever, weat itch, hives and other skin conditions.

Lemongrass is known for warding off insects; you get a pleasant smell and the bugs stay away. Safe to use daily as a preventative as will NOT dry out skin or hair, makes hair shiny and soft. FEI compliant.



### Hi Shine

Quickly and easily removes tough stains and dirt, producing an INCREDIBLE shine!

Gentle enough to be used daily as it won't strip natural oils from horse's coat.

Rinses out easily and leaves no residue, specially formulated for the effective removal of Shapley's M-T-G and othe oil based products.



### Easy-Out

No rinsing and no residue. Quick and easy to use. Excellent for thoroughly cleaning your horse to the skin when it's too cold to bath, gets rid of dirt, dust and dandruff as well as urine, manure and grass stains.

Optical brighteners add incredible mirror like shine without making the hair slippery. Contains NO alcohol so it won't dry out the hair. Odour neutralisers to eradicate urine and other odours on coat Works well on dogs, cats and livestock.



### Equitone

Adds rich, natural colour as it cleans and conditions. Added conditioners make coat and tail very soft and smooth, rejuvenating sun-bleached hair on body and tails. Replenishes natural colour after body clipping.

Equitone easily and effectively removes stains to whiten and brighten hair, while providing a barrier to future stains. Enhances and deepens natural colour of the coat, mane and tail.



## Natural Elegance Magic Sheen

Deep, intensive rinse out conditioner for body and tail. Apply after bathing to both body and tail for incredible soft, manageable, shiny hair. Makes hair healthier and less brittle and prevents future hair damage.

Perfect for sun-bleached or damaged hair, rescues and restores dry, lifeless skin and hair. Intensive, therapeutic conditioner for coat, mane and tail. Produces superior softness and natural healthy shine



Contains the highest-grade, special blend silicone to produce incredible shine and detangling while protecting the hair from damage.

Pure product with a light fresh odour. NO alcohol or other fillers added, therefore won't dry out hair!

Effectively repels dust, dirt and stains keeping hair shiny and detangled for up to a week.

Reduces grooming time, can be used on wet or dry coat, mane and tail.



## Hi Gloss

Light, fresh smelling oil based spray that adds superior shine to highlight, accentuate and condition horse's coat, muscles and features. Makes dark horses shine to almost mirror finish and puts a bright shine on a grey or white coat by making the coat very reflective in natural or artificial light.

Good for use as a conditioner on horses when coat gets dulled or "danduff-y" from body clipping. Subtle strawberry fragrance.



Developed by a barber in 1938 to treat human skin conditions, Original M-T-G has proven itself to be nothing short of miraculous for horse skin issues. Original M-T-G is time tested and proven. It is veterinarian recommended as the only solution needed for a variety of bacterial and fungal skin problems.

Since the development of M-T-G, the Shapley's line of horse grooming products has grown to include safe and gentle shampoos, conditioners, oils, sprays, and even deodorizing cleansers for your horse.

## No1 Light Oil

Perfect for adding dramatic highlight shine to areas around horse's eyes, nostrils and ears as well as body and legs.

Detangles manes and tails while conditioning hair. Adds oil to revitalise dry coat, mane and tail. Conditions coat and skin after body clipping.

Easily and effectively removed with Hi Shine Shampoo.



## No2 Heavy Oil

Intensive revitalising treatment for skin and hair, great for use when body clipping.

Keeps the horses coat looking and feeling conditioned and healthy, may be used hot or cold.

Easily and effectively removed with Hi Shine Shampoo.



## Mane Mousse

Specially formulated for horse hair, gives perfect grip without being sticky. Makes plaiting easier and produces a professional, tight, neat look that can last more than one day.

Controls fly-away hair. Makes mane hair lay flat and tames tails. Excellent for training manes.

Once dry just apply a wet brush/sponge over it to re-activate the product.

Adds waves, fullness and volume to longer manes and tails.

Use on feathered legs to create fullness on draft breeds.



## Show Touch Up

Effectively covers stains, scars and blemishes. Easily whitens socks and markings to make them look natural and very white. Repels dirt and keeps sock white!

Does not smear, streak, clump or wipe off.

8 colours to naturally match any horse colour.

Developed specifically for horses.

Leaves a natural look and feel.

Safe to leave on or can easily be removed. Great for show dogs and show livestock.



## Super Tail Pick

With an easy to hold handle and wide teeth, removes tangles and burrs from manes and tails with minimal hair loss and breakage.



## Grooming Kit

Contains 8oz bottles of Original M-T-G, Easy-Out, Magic Sheen and Hi Shine along with a Shapley's Tail Pick, packaged together in a plastic carrier.

Use as an extra kit for the box or trailer.



## 1. Cowboy Magic® Rosewater Shampoo and Conditioner

An easy to use silk conditioner that produces great results.

Sizes: 16oz, Gallon

## 2. Cowboy Magic® Shine In Yellowout®

Neutralises yellow stains and brightens hair of all colours.

Sizes: 16oz, Gallon

## 3. Cowboy Magic® Detangler and Shine

Will neutralise static hair electricity instantly.

Sizes: 4oz, 16oz

## 4. Cowboy Magic® Green Spot Remover/Shower in a Bottle

Is easy to use and formulated to remove sweat, manure and urine spots instantly.

Sizes: 32oz, Gallon

## 5. Cowboy Magic® Super Bodyshine

Is formulated to reflect a spectrum of natural light.

Sizes: 32oz, Gallon



**KM ELITE  
LEATHERWORK**



Our KM Elite brides have fully adjustable nosebands, throat lashes and cheekpieces for maximum comfort and fit. They are made with the innovative 'one piece' system where the noseband is integrated into the head piece for reduced movement and improved fit. The headpiece is shaped around the ears and poll for maximum comfort.

## KM Elite Grackle Bridles

Our grackle bridle is made of the highest quality Argentinian leather with a soft sheepskin noseband. The grackle noseband is easy to fit and fully adjustable. In contemporary contrast white stitch.

**Colours** Havana, Black  
**Size** Cob, Full



All our leather has been tanned using vegetable oil which increases durability and longevity of the leather and colour.



## Luxury StIRRUP Leathers

Our very own contrast stitch luxury stIRRUP leathers now in stock. Made with super soft Italian leather. Slimline stIRRUP leathers with an ergonomic buckle to avoid rubbing.

They also match StrideFree saddles.

**Sizes** 54", 60"  
**Colours** Black, Chestnut, Brown

## StIRRUP Leathers

Soft laminated stIRRUP leathers are durable without compromising style and quality.

The soft leather reduces the risk of marking your saddle and boots. The lamination and nylon core also helps prevent the leather stretching over time.

Our innovative concave buckle is lightweight yet strong, and increases comfort for the rider.

**Sizes** 48", 54", 60"  
**Colours** Havana, Black



These leather reins with Biothane Grip are extremely popular among top riders. The Biothane gives constant grip in all weather conditions and will not stretch or snap under pressure. Benefits of Biothane: **mould Resistant, reinforced inner core increases durability but doesn't affect grip or flexibility, easy to clean, long lasting.**

## ProGrip Eventer Reins

The pimple Pro Grip Biothane increases grip, flexibility and comfort when using the reins.

**Colour** Havana, Black  
**Size** Childs 16mm - 44" 48" (with and without stoppers)  
Adults: 19mm - 54" (with and without stoppers)



## Smooth Grip Biothane Reins

Our smooth grip biothane reins have been designed for show jumpers and dressage riders, the 16mm size has been a favourite of many top dressage riders - especially when using a double bridle. Without Stoppers.

**Colour** Black, Havana  
**Size** Width: 16mm (black only), 19mm With stoppers



## Equus Race Reins

British made premium quality racing reins. Equus leather race reins have been designed using hard wearing, durable thick rubber for extra grip. The rubber is set back 12" from the bit ensuring grip even when riding short. The reins are stitched with strong, thick thread to reduce the chance of stretching or breaking. They are made with billet buckle bit attached to conform to racing standards.

**Colour** Havana with Traditional Equus Orange  
**Size** 58"



## Kriss Race Reins

These race reins have been developed specifically for racing. The wide rubber grip offers supreme grip in all weathers. The buckle is racing standard. These are also great for eventers going cross country.

**Colour** Orange/Havana  
**Size** 58"







## Memory Foam Girth

Our memory foam girth has an outer layer of Coolmax material to ensure maximum breathability. While the underlayer of memory foam moulds to the horse offering a comfortable material against the skin.

**Colours** Black, Brown

**Sizes**

Dressage: 20", 22", 24", 26", 28", 30", 32"

GP: 40", 42", 44", 46", 48", 50", 52", 54", 56", 58"



## Bigg Comfort Standard Headpiece

Wide across the poll to disperse pressure. Cut back and curved away from the ears. Lobe which the browband sits upon. Unique browband block which stops the browband from slipping down and also slightly lifts the straps away from the cheeks to help reduce TMJ nerve pressure. Snaffle to double convertible with addition of headslip and extra cheekpieces. Curved oversized browband to give shape, style and space for the ears. Flexible Arrow grip reins included. Standard width range available in cob, full and extra full sizes.

## Bigg Comfort Petite Headpiece

Slimmer over the poll than the standard headpiece but still wider across the poll than a traditional headpiece. Cut back and curved away from the ears. Lobe which the browband sits upon. Unique browband block which stops the browband from slipping down and also slightly lifts the straps away from the cheeks to help reduce TMJ nerve pressure. Snaffle to double convertible with addition of headslip and extra cheekpieces. Curved oversized browband to give shape, style and space for the ears. Flexible Arrow grip reins included. Petite width range available in pony and cob sizes.



## Bigg Comfort Cavesson

Tapered shape which is wider across the nose to disperse pressure. Removable padding across the nose which helps to give space for the nostrils to fully flare. Buckle guards to reduce friction. Double buckle pad fastening.

## Bigg Comfort Removable Offset Flash

Tapered shape which is wider across the nose to disperse pressure. Flash straps fully removable and attachments slip up to sit discreetly on the padding. Removable padding across the nose which helps to give space for the nostrils to fully flare. Buckle guards to reduce friction. Double buckle pad fastening.



## Bigg Comfort Jointed Drop

Tapered shape which is wider across the nose to disperse pressure. Ring on the lower chin straps give movement to help relax the jaw and higher jowl strap is fixed to aid simple fitting. Removable padding across the nose which helps to give space for the nostrils to fully flare. Buckle guards to reduce friction. Double buckle pad fastening.

### Bigg Comfort Fixed Drop

Shaped around the nose with chin and jowl straps fixed for stability. Removable padding across the nose which helps to give space for the nostrils to fully flare. Buckle guards to reduce friction. Double buckle pad and strap fastening.



### Bigg Comfort Mexican Grackle

Padded straps and leather padded wide nosepad to help keep the straps away and give space for the nostrils to fully flare. Extra padding under the rings to help elevate pressure over the cheekbones. Buckle guards to reduce friction. Double buckle pad and strap fastening.

### Bigg Comfort Low Profile Grackle

Padded straps and leather padded wide nosepad to help keep the straps away and give space for the nostrils to fully flare. Connecting straps sit under the cheekbones. The shape is inspired by the English grackles used in racing to this day. Buckle guards to reduce friction. Double buckle pad and strap fastening.



### Bigg Comfort Show Hunter Bridle

Traditional straight style noseband with removable padding across the nose which helps to give space for the nostrils to fully flare. Discreet padding to the headpiece, browband and noseband. Removable 4th strap to keep the headpiece clean for the showing. Plaited browband, laced reins and plain curb rein for those finishing touches. Double buckle pad fastening.



### Bigg Comfort Hire Bitless Multibridle

The Hire Bridle Pack is the perfect way to fit and trial the Bigg Comfort bridle without having to use stock bridles for each client. The pack consists of the desired range with all noseband options, stamped HIRE with a distinctive colour padding to keep your pack being asked about! Available in a full range of options of headpiece, noseband and colourways.



STRIDE FREE

STRIDE  
FREE®

BECOME A  
SADDLE  
FITTER  
IN THE UK OR  
EU

BE A PART OF ONE OF  
THE WORLD'S MOST  
INNOVATIVE SADDLE  
DESIGNS



## WHAT IS INCLUDED

- Do you love horses?
- Looking for a career in the horse industry?
- Join an Australian owned family business since 1985
- Be a part of team of saddle fitters across the UK & EU
- No limits on earning a good income
- Training provided
- Specialise in Equine back health and look after both horse and rider comfort
- Learn lifelong skills

## SADDLE FEATURES

- ✓ StrideFree Tree
- ✓ Fully adjustable
- ✓ Comfort for rider
- ✓ Customised
- ✓ Short Panels
- ✓ Cut away shoulder

For more info email [jen@kmliteproducts.com](mailto:jen@kmliteproducts.com) or call 01403 759659

## STRIDE FREE DRESSAGE SADDLES



### SF Elite/Adjustable

The Stride Free Elite is a dressage saddle with the new Stride Free tree, but with the option of knee rolls on the outside of the saddle for that closer contact feel. You can pick from three different styles of knee rolls and our specialist saddlers will be able to adjust the angle of the knee roll for optimum comfort. The ideal monoflap.

Colour Black

Size 16.5", 17", 17.5", 18", 18.5"

Knee Block Options: #10, #11, #12



### SF Deluxe

More forward seat to help improve the rider's balance and position. New extra soft knee blocks. Super soft padding in seat. Extended Stirrup Bars for ideal leg position. StrideFree Tree® for ultimate shoulder freedom.

Colour Black



### SF Geneva

The Stride Free Geneva is a dressage saddle manufactured using the Stride Free tree, offering optimum comfort for horse and rider.

Colour Black

Size 17", 17.5", 18"

### SF Kitzbuhel

The Stride Free Kitzbuhel, inspired by the beautiful town itself in Austria, is built using the Stride Free dressage tree. Ideal for the rider with its unique design and shaped dressage flap.

Colour Black

Size 17", 17.5", 18"





BESPOKE SADDLES AVAILABLE FOR SPECIAL ORDER

### SF Classique

The StrideFree® Classique is a unique dressage saddle style designed for the rider with classical dressage in mind. It has a slightly forward cut flap and shallow seat. Available with round or square cantle it has a fully adjustable tree from extra wide to narrow with a narrow twist. The seat is soft and comfortable and there is a generously wide channel for spinal clearance. The wool flocked panels can be easily repacked on site and you have the option of short panels if necessary. There is a lifetime warranty on the tree.

**Colour** Black  
**Size** 16.5", 17", 17.5", 18"

### SF GP Saddles

The StrideFree General Purpose Saddle is the perfect saddle for the discerning everyday rider suitable for young riders starting out, older riders for support and comfort and pleasure riders who would like something to do a bit of everything in. Combining the light-weight forward cut design of a jump saddle with the slightly deeper seat, for the all-round rider who is looking to participate in all equestrian disciplines.

**Colour** Black, Brown  
**Size** 17", 17.5", 18"



## SHOW JUMPING SADDLES

### SF Melbourne 2

The Stride Free Melbourne 2 has been specially designed with a close contact fit to allow the rider to feel the horse underneath them and create balance when jumping.

**Colour** Chestnut  
**Size** 17", 17.5", 18"



### SF Kanga

The newest edition to the StrideFree® range has been designed for optimum comfort of both the horse and the rider. With softer seat and narrow twist for closer contact between horse and rider, it offers support over the fence without being rigid. To ensure the fit and comfort of your horse, these saddles are only fitted by our selection of master saddlers and cannot be purchased online.

**Colour** Havana  
**Size** 16.5", 17", 17.5", 18"



### SF Melbourne Monoflap

This saddle has been refined for close contact, with the stirrup bar alignment supporting the mobility and forever changing gravity of the rider to suit his or her position.

**Colour** Brown  
**Size** 17", 17.5", 18"

### SF Endurance Saddle

StrideFree® Endurance II . Developed with the notion of providing the endurance rider with ultimate comfort for long rides, alongside maximum comfort for the horse.

**Colour** Havana  
**Size** 17", 17.5", 18"



### SF Merrijig

For the rider that spends long days in the saddle. This saddle oozes quality and style as well as providing all day comfort. Whether riding for pleasure along picturesque trails, or working the land, this saddle that suits both the rider and their horse with the necessary durability to withstand the changing terrain. Complete freedom for the horse from the Stride Free tree. High quality grippy leather, with a soft padded seat. Choice of sheepskin or felt panels. Interchangeable open-shape gullet system in narrow, medium and wide. Choice of latigo or standard girth straps.

**Size** 16", 17", 18"



### SF Flyer

- Total weight 6kg including fenders and stirrups
- Italian leather
- Adjustable girth straps
- Wool flocked panels
- Generous channel width for spinal clearance & airflow
- Fenders and stirrups included - lightweight synthetic stirrups
- Available with round cantle and deeper seat

**Colour** Black, Brown. Variety of tims and coloured stitching.





## Stride Free Exercise Saddle

The innovative Stride Free tree design allows freedom of movement for the horse. The tree sits either side of the wither, and flexes with the horse's back. It offers a large load bearing area, increased freedom of the shoulder movement which in turn can lengthen stride.

The seat has extra padding for riding comfort, stainless steel stirrup bars with a safety clip.

**Colours** Black, Havana, Newmarket



**“** I have been absolutely blown away by the difference riding in a Stride Free saddle has made to the ride the horses give! They are so much freer in their movement and I can really notice the difference in their stride length!

**Jamie Moore**  
Jockey



## Stride Free Jockey Saddle

This saddle offers a large load bearing area, increased freedom of shoulder movement and can lengthen the stride. The unbreakable tree flexes with the horse's back shape and resists even a car driving over it.

There are 2-4 exchangeable girth billets and an antislip-bottom. Available in black with multiple colour lining choices, 600g+ saddles available with lead-pockets,

**4 standard sizes** 350-400g / 600-700g / 1000-1100g / 1900-2000g

Please contact our office for size and colour options. Prices change with size/weight

Please note, most saddles will be specially ordered for customers so it may take a couple of weeks to arrive.



**AERO 195g**

**“** I am Swiss born and came to England in order to Event and become an Instructor/Coach. I shadowed the GB Eventing Team and worked for International Event and Olympic Dressage riders before setting up on my own. I have since competed at 4\* level in Eventing and PSG in Dressage.

I'm extremely passionate about producing horses correctly and keeping them feeling happy and well in their work, so StrideFree was a natural choice for me and has proved to fulfil all these wishes.

**Christina Wiederkehr**  
International Event Rider  
#alwaysstridefree



## Stride Free Synthetic Exercise girth

Elasticated Atherstone synthetic girth, with softy padding. Colours match Stride Free Saddles. Anatomically shaped to allow free movement in the shoulder.

**Colours** Black, Havana  
**Sizes** 48", 50"

## Peter Horobin Softy Girth

The PH Softy Girth is contoured for comfort of the horse.

**Padded throughout, elastic both ends, contoured for comfort, easy roll stainless steel buckles (for easy girth up, rolled, padded edging)**

**Colours** Black, Brown  
**Sizes** 24", 26", 28", 30"



## Peter Horobin Leather Care

Peter Horobin Leather care has been manufactured using the highest quality ingredients to protect your tack. Peter Horobin has been using these products for over 15 years, so they have been tried and tested by the manufacturer himself!

All the saddle cleaning products you need to keep your saddle clean and nourished.

- PHS Saddle Soap 500ml
- PHS Leather Oil 500ml
- PHS Leather Balm 500ml



## FREEDOM GIRTHS



ALSO AVAILABLE WITH STITCHING TO MATCH SF SADDLES

The revolutionary concept of this girth, makes it the first on the market that works in conjunction with a horses' natural muscle movement. Its extreme flexibility makes it capable of folding in on itself, easier to transport and takes up no space! The Freedom Girth is a unique product, manufactured in Europe using only the highest quality materials in compliance with EU standards. This girth has been produced with the well-being and comfort of the equine as the focal point. It's quality will ensure that you will have many years of happy usage. **Available in Black, Chocolate or Honey. Refer to our website for sizing options.**

## Strong and resistant

The Freedom Girth is the only girth on the market manufactured with non-deformable polymer fibres integral to its structure. This material is used within the body of the girth without cuts, making it so strong that it is not possible to break. This material is the latest in it's generation, used in extreme sports (climbing, air sport) is approved by EU Security requirements and has a current Certificate of Inspection.



## Complete freedom

Freedom Girths offer independent support of the intercostal muscles, both right and left with independent support of the pectoral muscles, both upward and oblique.

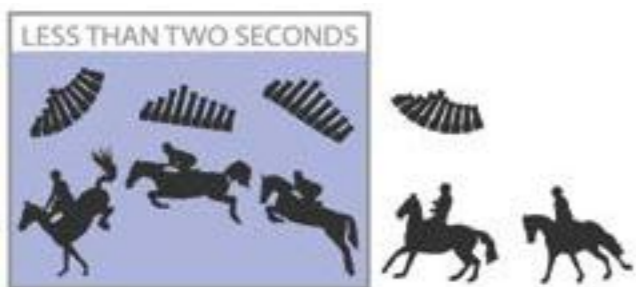


## Maximum air circulation, maximum sweat reduction

It's unique sectional construction allows maximum air circulation and reduces sweat to a minimum.



Girths used for jumping have all been designed to secure the saddle to the horse's body. Until now!!! THE FREEDOM GIRTH HAS BEEN DESIGNED TO JUMP. The Freedom Eventing and Jumping girths retain all the benefits of the Freedom Dressage Girth (intramuscular movement, ventilation, sweat management) but the design has been perfected for each discipline. In Jumping, the horse has to approach the fence with good rhythm and balance, with impulsion and fluid movement to tackle the most important thing that defines the competition, THE JUMP! That definitive movement and moment takes less than TWO SECONDS. All girths are available in Black, Chocolate or Honey. Refer to our website for sizing options.



### Designed to jump

This diagram shows the movements and pressures on the dorsal vertebrae and muscles in different positions - before, during and after the jump. The Freedom Girth focuses on the actual movement of the horse, by resting on the intercostal muscles, this allows free movement and provides total independence between the pectorals and the connection to the saddle.

### Support the horses' natural movement

A conventional girth holds the saddle in a rigid lateral position which blocks the natural movement of the body and increases pressure on the chest muscles.

The Freedom Girth has been carefully designed to compliment the horse's movement, allowing the saddle to remain in the correct position through the entirety of their jumping movement, removing and restrictions from the horse.



# RIDER ESSENTIALS

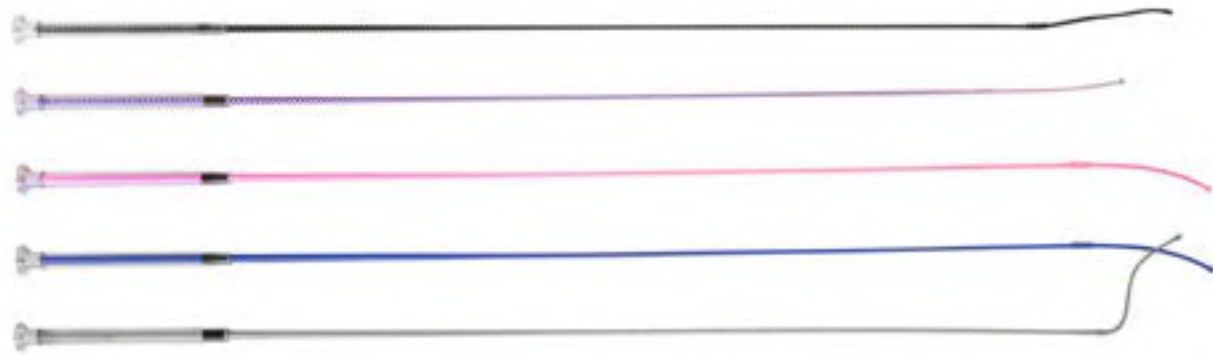


We manufacture a wide range of whips from lunge to junior to dressage, with different lengths, colours and weights all at affordable prices.

## DRESSAGE WHIPS

### Cush Grip Dressage Whip

Size 110cm Colour Silver Braided - Black, Purple, Pink, Blue, Silver



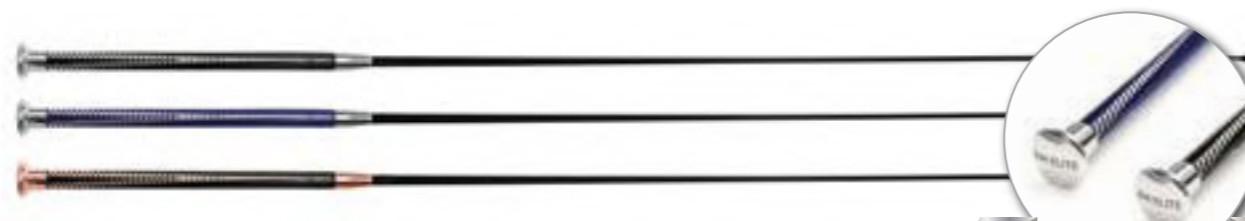
### Silver Braided Dressage Whip

Sizes 110cm Colour Black, Purple, Pink, Blue, Silver, Red



### Ultra Balanced Dressage Whip

Sizes 110cm Colour Black, Navy Blue, Rose Gold



NEW!

## CRYSTAL GRIP WHIPS

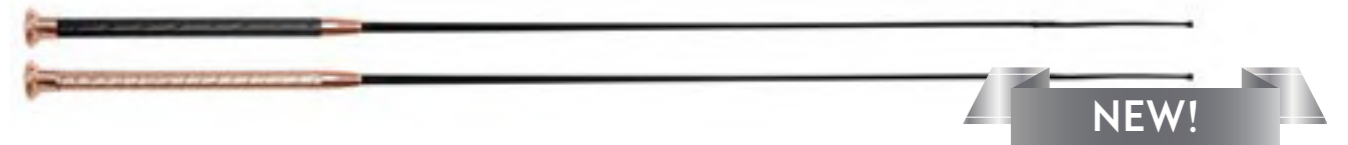
### Dressage Whip

Size 110cm Colour Blue Crystal, Pink Crystal, White Crystal Preciosa



### Dressage Whip Leather Grip with Rose Gold Cap

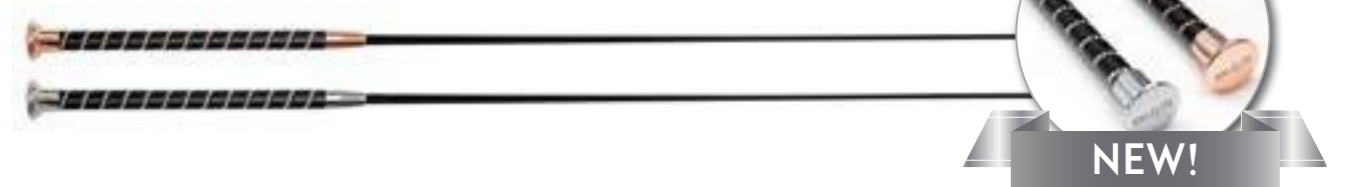
Size 110cm Colour Black, Rose Gold



NEW!

### Dressage Whip Black Grip with Crystal Spiral

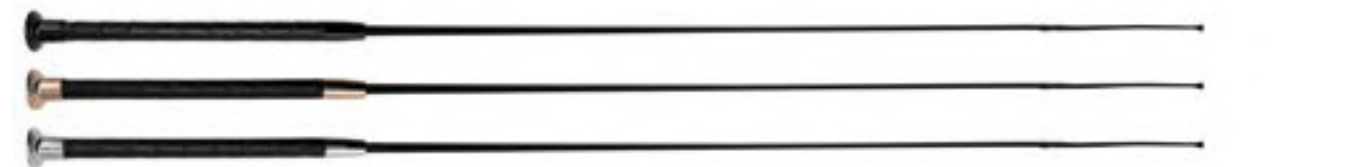
Size 110cm Colour Rose Gold, Silver



NEW!

### Dressage Whip Black Grip with Black Crystal Spiral

Size 110cm Colour Black, Rose Gold, Silver





## JUMP WHIPS

### Padded Event Bat

Size 60cm Colour Black



### KM Cush Grip Jump Bat Whip

**\*\*Fully compliant to new BS & BSJA Standards\*\***

Our KM Elite Cush Grip Jump Bat is available in six different colours. The cush grip is made from TPU which has been designed and manufactured to be durable and resilient without forfeiting comfort for the rider.

- kinder to your horse
- lightweight
- perfectly balanced

Colours Black, White, Green, Red, Blue, Purple

Sizes 65cm



CAN BE CUSTOMISED TO YOUR BRAND OR DESIGN SUBJECT TO MIN. ORDER OF 100

### KM Cush Grip Jump Bat Slimline Whip

**\*\*Fully compliant to new BS & BSJA Standards\*\***

Our KM Elite Cush Grip Jump Bat is available in six different colours. The cush grip is made from TPU which has been designed and manufactured to be durable and resilient without forfeiting comfort for the rider.

- kinder to your horse
- lightweight
- perfectly balanced

Colours Black, White, Green, Red, Blue, Purple

Sizes 65cm



CAN BE CUSTOMISED TO YOUR BRAND OR DESIGN SUBJECT TO MIN. ORDER OF 100

### KM Cush Grip Junior Jump Bat Slimline Whip

**\*\*Fully compliant to new BS & BSJA Standards\*\***

Our KM Elite Cush Grip Jump Bat is available in six different colours. The cush grip is made from TPU which has been designed and manufactured to be durable and resilient without forfeiting comfort for the rider.

- slim handle
- kinder to your horse
- lightweight
- perfectly balanced

Colours Black, Purple

Sizes 55cm



CAN BE CUSTOMISED TO YOUR BRAND OR DESIGN SUBJECT TO MIN. ORDER OF 100

## JUNIOR WHIPS

### Cush Grip Whip

Size 60cm Colours Black, Silver Grey, Royal Blue, Hot Pink, Purple, Orange



### Silver Braided Jump Whip

Size 60cm Colours Royal Blue, Purple, Silver Grey, Hot Pink



### Black Grip Whip

Size 60cm Colours Black, Purple



### Deluxe Junior Balance Dressage Whip

Sizes 80cm Colour X Rubber Grip - Black, Purple



### Deluxe Balance Dressage Whip with Split Flap

Sizes 70cm, 110cm, 120cm Colour X Rubber Grip - Black



## RIDING GLOVES

All styles of gloves are available in the following sizes: 6.0, 6.5, 7.0, 7.5, 8.0, 8.5, 9.5.  
Pro Grip and Wet Grip also available in size 10.



### Pro Grip

Our ProGrip gloves are made with high quality and light-weight material which fits closely, without restricting movement.

- Extra soft washable material**
- Excellent durability**
- Anti-stain**
- Reinforced high wear areas**
- Colours Black, White, Navy**

### Wet Grip

This innovative glove has been designed to provide superior grip in all weather conditions. The specialist material becomes tacky when wet, avoiding the reins slipping through your hands!

- All weather Grip**
- Lightweight, breathable material**
- Elasticated, Velcro fastening**
- Colours Black**



### New Silicone Gloves

The most flexible, stretchy glove, offering a supremely comfortable fit - with the addition of a silicone palm for extra grip. The elasticated velcro cuff fits securely and means they are ideal for many everyday uses.

Washable on a low temperature, lay flat for a quick dry and you can use them again and again.

**Colour Black**



### All Rounder

Classic comfort fit glove for all disciplines. **Excellent Grip, sweat absorbing palm, velcro fastening for extra comfort, superior close fit.**

**Colours Royal Blue, Purple, Black, Blue Navy**



3M  
**Thinsulate**  
INSULATION

## KM Multi-Purpose Gloves

KM Elite are excited to introduce these brand new, unique multi-purpose equestrian gloves to our product range.

Working closely with one of the top glove manufacturers and designed specifically for KM Elite they can be worn when carrying out all aspects of stable management tasks by providing a safe handling solution. Whether you are mucking out, riding, working in the field or undertaking any job where your hands need protecting, our new gloves should be just what you need.

The soft, seamless, superior quality nylon gloves are designed to be close fitting and coated with a highly durable, flexible and comfortable nitrile palm allowing the most delicate or most robust of jobs to be undertaken.

Within a dry or wet environment, the grip performance maintains an excellent level, with no chemical, microbiological or electrical hazards.

The gloves have been tested in accordance with EN388:2016 and include a sanitisation process to guarantee the skin health of the wearer.

These safety gloves satisfy the essential requirements of Regulation (EU) 20 16 /425 as brought into UK law and amended.

Resistant to urine  
Contact heat tested - suitable for farriers and extended periods of clipping  
Touchscreen finger tips

Available in 4 colours Red, Orange, Brown, Blue  
Available in sizes: XS - L



DISPLAY STAND  
AVAILABLE  
**FREE OF CHARGE**  
WITH EVERY ORDER  
OF 104 PAIRS  
SMALLER STAND  
FOR 48 PAIRS ALSO  
AVAILABLE

“

*I have been a brand ambassador for KM Elite for many years now and have also been impressed with the quality of the products. They are constantly increasing and updating their range and adapting to riders needs and requests. I am proud to be an ambassador for them!*

**Andrew Gould**  
International Dressage Rider



**FOXYS**

*Finesse*

Tel: 07921 316229  
www.foxytwinhorseboxes.co.uk

66 VTK

## British Dressage Preliminary Tests

The Approved Official British Dressage Tests with Diagrams for current year, A4 size, laminated and in a clear and concise layout. **All levels available**



## Horseman's One Step

Releases deep-down dirt and grime, gently lifting it away, then preserves and conditions the leather to keep it soft and pliable. This unique cream conditioner penetrates leather to protect it against mould, drying and cracking while leaving a beautiful satin sheen, all in one easy step.

Sizes 425g



## Equidisc

Flexible white plastic bridle number holder, approved by British Dressage for competition use. Fits onto any strap up to 3/4" wide without having to undo tack. Reusable, includes plastic storage case. Available in 3 or 4 numbers, blue or red subject to stock.



## Optimum Stop Watches

Designed to be big and bold in the event market, also ideal for Carriage Driving Trials and Pony Club Events.

**Massive LCD display - the 38mm x 20mm viewing area has digits 16mm high**

**Compact & Comfortable - For a timer with such a big display the watch is very compact**

**Counts up in minutes and seconds and the alarm sounds 4 beeps on every full minute**

**Water-Resistant Case - Guaranteed (10m depth)**

Compact event watches also available



NOW AVAILABLE WITH USB CHARGE

## KM Elite Impulsion Roller Ball Spur

A great spur for those horses that just need a subtle cue. Top-quality stainless steel.



## Leather Spur Straps

Smart, Long lasting and great for competition use.



## Braided Spur Straps

Easy to use, durable and easily adjustable to fit any size.



## Sporty Haft - Sticky Bum Spray

Can be used for all disciplines. Helps improve your leg and seat position and gives you optimum grip on the saddle and flaps.



## Medical Armband

Totally Smart medical armband is made from strong plastic with an elasticated adjustable strap that will fit children and adults.

It has a printed medical card which needs to be completed before competing.



## Drybrow Hat Liner

Drybrow is a slimline liner that fits discreetly inside the front of your riding hat. It wicks away and prevents the build up of sweat on the inside of your hat. Drybrows are made of a super absorbent polymer and permeable paper which ensures that they soak up sweat and hold moisture.

**Simple, easy-to-use and affordable**

**Used and recommended by many professional riders for day-to-day and competition use**

**Super lightweight**

**Very discreet**

**Available in packs of 10**





## Renapur for Equestrian Leather Care

Trusted and loved by equestrians around the world, Renapur products will clean and protect your valuable saddles, tack and leather riding boots. The reason for this trust is quite simply that Renapur products will make light work of your tack cleaning and leave it looking wonderful.

### Renapur Leather Balsam

Considered by many the finest leather conditioner in the world and a superior alternative to saddle soap. You will find it being used as the preferred option for equestrian leather care from the smart show rings of England to tough working ranches in Texas and Australia.

It will restore the colour to leather that has faded or worn and is colour neutral so will work on all colours. It will help naturally waterproof your leather, giving it the ultimate protection from the elements and extending its life. Finally, Renapur Leather Balsam is also stunning value as a little goes a long way. A single 200ml pot should condition well over 50 saddles.

Size 50ml, 125ml, 500ml (Exclusive size), 1litre



### Renapur Leather Cleaner Spray

Perfect for use as a deep cleaning leather saddle treatment to rid your saddlery and tack of the daily sweat, mud and grime. This leather cleaner is made from plant extracts, it's non-aggressive and non-abrasive, is pH neutral, environmentally friendly and 100% biodegradable. It doesn't contain any of the nasty alcohol, solvents or detergents which can strip the natural oils from your saddlery and tack.

Size 250ml

### Renapur Suede and Fabric Protector

This eco-friendly advanced spray solution protects suede, nubuck, sheepskin, canvas, fabrics and many other absorbent materials from liquids, mud, oil and stains – but itself stays invisible. Does not affect the visual appearance, feel, texture or colour of the treated item and is easy to use and long lasting.

Renapur protector is the safest and most effective protector spray available – free of harming solvents, aerosols or any other aggressive substances. It can even be used for the treatment of baby clothing according to OEKO-TEX® standard.

Size 100ml, 250ml





KM Elite's high quality, Argentinian polo belts are made of durable leather and available in 11 stylish colours and a wide range of sizes to suit your riding wardrobe. We also have 4 different Argentinian Head collars to match your belt!



### Traditional Polo Belts

Our KM Elite Polo Belts are made from the highest quality buffalo leather, they are durable and long lasting without comprising style. They are available in 8 colours, two different widths and sizes ranging from 75 -105cm

**Colours** Porterhouse, Original, Blush, Ice Cool, Traditional, Ebony, Sapphire



## STABLE AND YARD



## KM Elite Extra Strong 40" Deluxe Haynets

Probably one of the strongest, most durable and luxurious hay nets on the market today. The KM Elite Deluxe Haynet is made of polyethylene, steel rings/hooks and other thicker than normal materials, to ensure it will weather harsh seasonal conditions and general usage, year after year.

**Hole size** 2"

**Capacity** 6.5kg

**Colour** Black, Hot Green, Hot Orange, Hot Pink, Navy Blue, Teal, Purple, Raspberry, Red, Yellow

## KM Elite 23" Small

Travel/Pony Haynets

Ideal for laminitic horse or ponies and ideal to keep in your lorry for travelling.

**Hole size** 1.5"

**Colour** Black, Hot Green, Hot Pink, Navy Blue, Purple



## KM Elite Extra Strong 40" Two Colour Haynets

**Hole size** 2"

**Capacity** 6.5kg

**Colour:** Black/Hot Green, Black/Hot Pink, Black/Pastel Blue

## Elim-A-Net™

Much more than your average haynet! The 'Inner Net Design™' creates a physical barrier which alters the shape and size of the holes, compared to a standard haynet, to prevent rapid forage consumption and over eating. Elim-a-Net™ is an ideal solution for feeding greedy or overweight horses and ponies, those suffering from/prone to laminitis, as well as easing boredom and helping to alleviate vices in horses stabled for longer periods of time and horses on box rest.

Elim-a-Net™ is suitable for use with hay and haylage.

- Maintaining a healthy digestive system
- Prolonging feeding time
- Eliminating the need for double netting
- Preventing overfeeding
- Less mess
- Cost effective
- Extra strong with metal rings top and bottom

**Size** Horse, Cob, Pony

**Colour** Black/Green, Black/Red, Black/Blue



**elim-a-net**  
The original, slow feeding haynet

Exclusive Inner Net Design

Pony
  Cob
  Horse

**IMPORTANT TYING INSTRUCTIONS**  
Loop hanging rope through bottom ring & tie with a quick release knot

**ACQUIRED AND DISTRIBUTED BY KM ELITE**





## KM Elite Traditional Large Hole Haynet Extra Strong 42" with 5" holes

Manufactured in exactly the same way as our Deluxe 40" Haynet, this traditional style of net is just as strong and durable but with larger holes.

Two handy advantages of this top quality product are the large ring at the bottom of the haynet to help tie back on itself and small rings at the top making it very accessible and easy to open to place the hay inside.

**Size** Large 42" with 3.5" holes  
**Colour** Royal Blue, Black

NEW IMPROVED

## Jumbo Haynet

Extra strong JUMBO size Haynet 48" with 2" holes  
**Colour** Navy Blue



## KM Elite Bungee Ties

**With upgraded polished chrome hardware**

The highest quality bungee ties available on the market today. 23" long, made from 1/2" bungee cord, fitted with a quick-release panic snap one end and a bull snap on the other. Designed so that the quick release panic mechanism can be manually undone, even if the horse pulls back. As always, only ever tie up a horse for short periods, and NEVER leave unattended.

**Colour** Burgundy, Black, Grey, Hot Green, Hot Orange, Hot Pink, Hunter Green, Navy Blue, Pastel Blue, Purple

## Equi-Ping

Equi-Ping is a safety tether release for horses and ponies. This new product comes in a range of colours and is a must have piece of safety kit.

Simply attach Equi-Ping to the metal ring on your stable wall, horsebox or trailer, then tie your horse's leadrope to it. If your horse or pony panics and pulls back, the Equi-Ping is designed to 'ping' open when a certain stress point is reached to help avoid injury to the horse.

**Colour** Black, Blue, Green, Pink, Purple, Red, Yellow



## 1. Original Tubtrugs®

Tubtrugs® have long been a firm favourite with equestrian lovers. Tubtrugs® are resilient, versatile, and made from 100% pet safe plastic. Also useful for many household jobs such as laundry baskets and for gardening.

**Sizes**  
Micro: 0.37Ltr, Mini: 5Ltr  
14Ltr, 26Ltr, 38-42Ltr, 75Ltr  
Shallow: 15Ltr, 35Ltr

## 2. Tubtrugs® Lids

A useful see through rigid lid for keeping the contents of your Tubtrug contained. Also enables you to stack your Tubtrugs.

**Sizes** S, M (also fits 15L Shallow), L



## Drip Feeder

A great toy for horses on box rest, in the field or as a long lasting treat in the stable. Slow rolling for a safer play. Stimulates natural grazing and can relieve stress and boredom. Made from high quality, food grade material.

**Colours available subject to stock** Blue, Baby Blue, Hot Pink, Pistachio, Purple and Red.



## Black Rubber Skips

The absolute classic Tyre Rubber product. Super flexible and strong, and heavy enough not to blow away in the wind.

It can be rolled on without damage to skip or livestock!

Tyre Rubber won't crack in the frost or degrade in sunlight, and can be scalded for cleansing.

**Sizes** S,M,L



## Multi Purpose Bin 100Ltr

The Multi Purpose Bin has a capacity of 100Ltr, is robust, sturdy construction means it is and hard wearing even when dragged.

Secure lid clips prevent spilling and can accommodate a padlock and chain.



## 90Ltr Multi-Tub Circular or Rectangular

These large, rigid containers are made from 100% recycled material and will not crack in frost or degrade in sunlight, making them perfect for outdoor use. They are ideal as small ponds or reservoirs or as hydroponics, mortar tubs, garden wet areas, patio planters, animal troughs, waterfowl paddlers, aquatic plant containers etc.

**Colour** Black





## Gorilla Plas® Small and Medium Skips

Made from our revolutionary new recycled polymer, Gorilla Plas®, our new Small and Medium Feed Skips are tougher, stronger, and easier to clean and maintain than ever before. Made exclusively in the UK for Red Gorilla, these are the new industry leader for feed skips, with all the classic features of a rubber skip, but more usable and hardwearing by far.

Sizes Small (11L), Medium (20L)  
Colour Black



## Gorilla Plas® Shallow Bucket

Made from our revolutionary new recycled polymer, Gorilla Plas®, our new Shallow Bucket (B4) is tougher, stronger and easier to clean and maintain than ever before. Made exclusively in the UK for Red Gorilla, this B4 is the new industry leader for feed buckets, with all the classic features of our B4 rubber bucket, but more usable and hardwearing by far. With a capacity of 10L/2gal. and designed to pour from either side, the new Shallow Bucket makes light work of shifting and baling out feed, water, and just about anything else you care to carry in it. Volume: 2L, Weight: 1010g, Height: 17cm, Diameter: 35cm

Colour Black



## Gorilla Plas® Tidee Tray

Made from our revolutionary new recycled polymer, Gorilla Plas®, our new Tidee™ Tray (CDY.BK) is tougher, stronger and easier to clean and maintain than ever before. Made exclusively in the UK for Red Gorilla, this Tidee™ Tray is the ideal way to conveniently store and transport grooming equipment, cleaning products, or anything else you might want to keep handy. Also, being made in Gorilla Plas® it will outlast other caddys or trays, without breakage or wearing, and remain easy to clean and use for years to come.

Weight: 660g, Length: 39cm, Height: 18cm

Colour Black



## Gorilla Plas® Hanging Manger

Made from our revolutionary new recycled polymer, Gorilla Plas®, our new Hanging Manger is tougher, stronger, and easier to clean and maintain than ever before. Made exclusively in the UK for Red Gorilla, this A1 the perfect addition to your stable, giving a convenient feeding solution, with a durable, reliable form, and without any metal hooks to pose a risk to your horse. With a capacity of 15L/3.3gal. and the ergonomic form of the classic A1, our new Hanging Manger is the perfect product for easy feeding over a stable door, fence or wall.

Volume: 15L, Length: 41.5cm, Height: 21cm

Colour Black



## Tidee - with Manure Scoop

Lift manure from your stable, field or arena into a wheelbarrow without bending! This item will really help you save on bedding. Perfect for many uses in gardens, farms and stables. The Tidee comes complete with a rake. Why not match them to your Tubtrug®! Strong, lightweight and easy to clean.

Colour Baby Blue, Grey, Hot Pink, Pistachio, Purple



## Big Tidee

Our weather resistant Big Tidee with Short Metal Rake is designed to make mucking out quick and easy. The Big Tidee is perfect to use for paddock maintenance or for everyday garden use. The Big Tidee includes a Short Metal Rake which is designed to collect droppings more efficiently. The Tidee Grip makes using the rake more comfortable and accessible.



## Gorilla Shovels

Easy-to-use, lightweight but durable. Ideal for shovelling muck, foodstuffs and even rubble!

Colour Pistachio, Hot Pink, Purple, Sky Blue



## Tidee Companion Set

This set is designed to make mucking out and collecting waste more efficient. Our Ultimate kit is weather resistant and includes a rake, mini broom and a large scoop.

With this Tidee Companion Set, you will find mucking out more comfortable as the Tidee has a long handle which helps to reduce back pain. It's compact design is easy for storage.

Excellent on Arena surfaces  
Poo picking fields  
Skipping out stables  
Cleaning the lorry or trailer  
Collecting leaves and apples  
Tidying around the garden





### Gorilla Broom

The 50cm Complete Gorilla Broom® is designed to make your job easier. Built with unique features such as an integrated scraper blade, making removing 'stuck bits' even easier as well as; an anti-clog channel which cuts down flying dust for a clean sweeping action. The brooms extra-wide head means you can shift more with minimal effort. Performs well in a wet environment, as the non-porous polymer head and bristles soak 0% fluid.

Available in 30cm and 50cm head.  
 Colours: Red, Yellow, Navy Blue, Purple, Hot Pink, Pistachio



### Deluxe Corn Broom

The Deluxe Broom from Red Gorilla® is like no other. Tested by riders, the Deluxe Broom performs well in wet environments with easy clean sweeps as the polypropylene bristles don't stick together. These brooms are strong and lightweight, featuring flexible heads and a durable detachable handle. Available in Blue (Large only) and Red (Standard only), making you stand out from the crowd.

Dimension:  
 Red - Standard: head 45 x 30cm + handle 110cm  
 Blue - Large: head 52 x 33cm + handle 110cm

### KM Elite Plastic Coated Chains

Heavy duty plastic coated chain for use in your lorry or yard. With improved, heavier quick-release panic snap at one end.  
 Sizes 55cm, 87cm



### KM Elite Double Ended Clips

Perfect to be used on each end of a stall chain or for hanging buckets.



### KM Elite Wall Mounted Tie Ring

With 4 screws.



### KM Elite Wall Mounting Bracket

Made with galvanised steel, ideal for stall chains and stall guards. Sold singularly (with 4 screws)



### KM Elite Stall Guard

Made with heavy duty webbing, adjustable fit. Colours Black, Navy



### KM Elite Stall Chains

These high quality stall chains enable light and fresh air into your stable. Our improved version have even stronger aircraft cord in the centre and extra polished chrome to stay shiny for longer. All stall chains have a breaking point; we would not recommend using these unless your horse is kept in a secure environment. Available in a full range of colours to match or compliment the KM Elite range of accessories.

Colours Baby Blue, Black, Hot Green, Hot Pink, Navy Blue, Teal, Purple, Raspberry, Red





## KM Elite Ultimate Shavings Fork

An extremely durable fork designed by professionals and made with the highest quality materials whilst virtually unbreakable. The shaft is made of lightweight aluminium and with the strong yet flexible head, makes this a must have for your yard. The ABS plastic tines are spaced perfectly to make mucking out easy and strong enough to help you speed through your stable chores.

**Adult handle** – 115cm with 40cm head

**Junior handle** – 95cm with 30cm head

**New, stronger Telescopic handle also available** – 75-115cm

**Colours** Black, Navy, Red, Hot Pink, Green, Grey, Purple, Orange, Gold, Lime.

Available in child's size



TELESCOPIC HANDLE AVAILABLE



## Manure Forks Four Prong 48" Four Prong T-Handle

Self coloured comfortable grip, lightweight, well balanced with strong spring steel prongs.

**Colours** Grey, Pink, Purple, Sky Blue



## Snow/Grain Shovel

A large, durable shovel with a 28" ash stem, ABS head and PYD hilt.

**Colours** Grey, Pink



## Yard Broom XL Black Bristles

20" wide head nylon bristles. Wooden handle and steel clamp.  
**Length** 150cm



## 1. KM Elite Corn Brooms

This lightweight corn broom is made of 100% natural fibre and is particularly good for sweeping out the nooks and crannies as well as general yard use.

- 1a. Ultimate corn broom
- 1b. Original corn broom
- 1c. Child's corn broom

## 2. Economy Yard Broom

A good all round stiff yard broom.

**Sizes** 12", 16", 20"

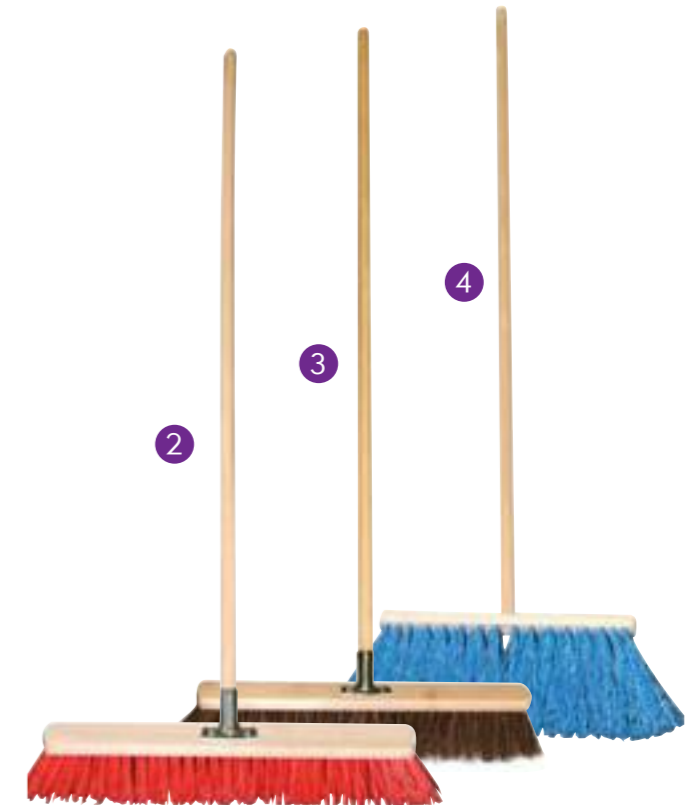
## 3. Bassine Broom

Suitable for all yard surfaces.

## 4. Yard Flick

Designed to have a real 'flick' action to give your yard a spotless finish. Light to hold and use.

**Sizes** 10", 14"



## Bostiq Bassine and Farmers Brooms

The Bostiq Farmers Brooms are unlike any other stable broom. They are extremely light to hold and very flicky. The polypropylene bristles give a fabulous finish to any type of surface and are particularly good on concrete and cobbles. Suitable for all yard surfaces and conditions.

A choice between the original Farmers Broom with long flicky polypropylene bristles and the shorter softer natural bassine bristle broom for more intense sweeping.

## Stable Bucket 7L Lid for Stable Bucket 7L

The smallest bucket in the range. Integrated liter scale. Perfect for storage of brushes, food, water or garden purposes. Also suitable for bucket holders in calf boxes.

Diameter bottom: 185mm  
Diameter top: 255mm  
Height: 230mm

**Colour** Black, burgundy, green, hot pink, lime, navy, orange, purple, red, royal blue



## Robust Bucket 15L and 20L With spout

The Robust bucket is made from sturdy and UV-resistant plastic that withstands ammonia and acid. It has a strong grip, grading and pour spout.

Diameter bottom: 240mm  
Diameter top: 320mm  
Height: 300mm

**Colour** Black, green, hot pink, navy



## Sweat Scraper

The one-hand sweat scraper is a great tool to add to your grooming kit. This scraper will pull away excess water after showering your horse and will allow a faster drying. The soft rubber edge and contour design conforms to your horse's body for a gentle but effective scraping.

**Colour** Black, blue, green, hot pink, navy, red



## Step Stool

Strong and sturdy stool for the stable. Perfect when mounting a horse or when you need an extra seat in the stable or elsewhere. 420x320x260mm

**Colour** Black, hot pink



## V-Plast Feed Bin + Lid + Smart Label

High quality feed barrel 40 or 80 litres equipped with lid. Easy locking and writable whiteboard label for keeping track of the content. Space saving as the design enables several barrels to be stacked when turning over the lids.



## VPlast Flat Back Bucket

Made from strong, durable and frost proof polypropen. Easy to carry, due to the flat side of the bucket. The corner enables smooth emptying, hopefully with no spillages. 15L.

**Colour** Black, Navy Blue, Hunter Green, Lime, Hot Pink and Red



## VPlast Manger

Made from strong, durable and frost proof polyptopen. Metal bracket or hooks options, plus a handle, enable hanging the portable manger over a stable door or field gate. Really easy to carry. 15L.

**Colour** Black, Navy Blue, Hunter Green, Lime, Hot Pink and Red



**GATEHOUSE**



## Conquest MKII Riding Hat and Liners

The Conquest MKII riding hat has been designed to offer the best in comfort, design and protection. Kitemarked and conforming to PAS 015:2011 and VG1 this stylish riding helmet has a flexible peak and is lightweight and well ventilated with a quick drying, wicking padded liner that can be removed for washing (spare liners sold separately). Suitable for all riding disciplines with the exception of cross country. This hat comes in a padded storage bag.

All sizes available on our website



## Chelsea Air Flow Pro Hat and Liners

The Chelsea is a stylish and flattering riding hat offering good ventilation and a high level of comfort. It has a quick drying, wicking, padded liner that can be removed for washing (spare liners sold separately). A popular hat suitable for a range of equestrian disciplines with the exception of cross country. This hat comes in a padded storage bag. Kitemarked to PAS 015:2011 and VG1 01.040 2014-12.

All sizes available on our website



### Rose Gold Limited Edition

Black/Rose Gold, Navy/Rose Gold

### Matt finish

Black, Navy

### Metallic Finish

Black

### Conquest MKII Liners



### Matt finish Pro Vent

Black, Brown, Navy

### Suedette Crystal

Black, Navy

### Suedette Finish

Black, Navy

### Chelsea Liners





## HS1-V Jockey Skull

This brand new development has evolved from the ever popular HS1 jockey skull. The HS1-V offers exactly the same high level of safety, being tested to the American Snell test criteria, the most demanding standard currently available to assess equestrian riding hats. The addition of the vents gives the rider the benefit of air circulation, aiding in keeping the head cool and features a soft four point padded harness with Aegis anti-bacterial lining for extra rider comfort. Suitable for all competition disciplines including cross country. The hat is provided with a smart padded storage bag.

All sizes available on our website

Colour Metal Black, Antracite Grey

- An evolutionary development of the globally-respected HS1
- Twin front and twin rear tri-flow ventilation points
- Advanced fibre-reinforced plastic + carbon fibre composite (FRP +CF) construction
- Expanded polystyrene (EPS) impact
- Polyester comfort lining
- Quick-release buckle and easy strap adjustment
- Optimised for protective performance, reduced weight and enhanced comfort
- Snell E2016 and ASTM F1163-15 compliant; certified by BSI and SEI
- CE marked to the requirements of the EU Personal Protective Equipment Regulation 2016/425



## HS1 Jockey Skull

Worn by many of the world's leading event riders, the Gatehouse HS1 is approved to the American Snell test criteria, the most demanding safety standard currently in manufacture for equestrian use. Snell includes a unique test that simulates a rider falling into a fence rail or having a secondary hit by a horse's hoof. This popular jockey skull features a leather four-point harness and Aegis anti-bacterial lining for rider comfort. Suitable for all competition disciplines. This hat comes in a padded storage bag.

All sizes available on our website

Colour Metal Black, Silver



## Lycra Stretch Covers available

check the website for details





## Ciana Riding Hat

Brand new to the Gatehouse range is this stylish and lightweight riding hat. Suitable for a complete range of disciplines except cross country. It has a quick drying, wicking padded liner that can be removed for washing and comes with a padded storage bag. Kitemarked to PAS 015:2011 and VG1 01.040 2014-12.

All sizes available on our website



**Matt/Gloss**

Black, Navy

**Matt /Matt**

Black,



**Matt/Glitter**

Black, Navy





## Jeunesse Riding Hat

The Jeunesse riding hat has been designed specifically with the young rider in mind. Kitemarked to PAS 015:2011 and VG1 01.040 2014-12, the hat is slimline and elegant with a quick drying, padded liner that can be removed for washing (spare liners sold separately). This hat can be worn for all disciplines with the exception of cross country and comes in a padded storage bag.

All sizes available on our website. Liners also available.



### Leather

Black, Navy, Navy/Red/White

### Velvet

Black, Navy



### Glitter

Black, Navy



## Air Rider MKII

The Air Rider MKII is an extremely lightweight and well ventilated riding hat making it perfect for everyday riding, especially in warmer weather. The hat features a four-point harness with dial adjustment for ease of fit, while the padded, wicking liner can be removed for washing (spare liners sold separately). This hat comes in a padded storage bag Kitemarked to PAS 015:2011 and VG 01.040 2014-12.

All sizes available on our website. Liners also available.

Colour Black, Navy



## Jockey Skull "4 Kids"

A popular junior jockey skull with a three-point harness and an Aegis antibacterial lining. Approved under all competition rules, including the Pony Club. This hat comes in a padded storage bag. Kitemarked to PAS 015:2011 and VG1 01.040 2014-12 safety standards.



## Hat Display Hanger

A handy display hanger branded with the Gatehouse logo suitable for use with slat walling.





## Superflex Contour Air Flow Body Protector

The Superflex Contour Air Flow body protector has a front zip fastening, with touch and close adjustment at the waist and shoulder for ease of fit. The perforated block foam construction offers maximum flexibility and allows close contouring of the body, while the mesh fabric outer ensures good airflow and breathability. Conforms to BETA 2009 Level 3, BSEN 13158.

All sizes available on our website.



| Gatehouse Superflex Contour Air Flow Body Protector Size Guide |           |           |                   |             |         |  |
|--|-----------|-----------|-------------------|-------------|---------|--|
| Front  | Chest (A) | Waist (B) | Over Shoulder (C) | Back length | Height  |  |
| Order Code   |           |           |                   |             |         |  |
| CHILD XS   | 81 - 88   | 66 - 61   | 52 - 51           | 37.0        | 127-128 |  |
| CHILD SMALL  | 84 - 71   | 60 - 64   | 50 - 65           | 40.0        | 107-126 |  |
| CHILD MEDIUM   | 89 - 72   | 63 - 68   | 63 - 69           | 42.0        | 123-144 |  |
| CHILD LARGE  | 73 - 79   | 67 - 72   | 68 - 74           | 45.5        | 123-144 |  |
| CHILD X-LARGE  | 78 - 84   | 70 - 77   | 73 - 80           | 50.0        | 141-158 |  |
| CHILD X-LARGE (SHORT)  | 78 - 84   | 70 - 77   | 73 - 80           | 48.0        | 141-158 |  |
| ADULT SMALL  | 85 - 91   | 70 - 82   | 78 - 88           | 53.0        | 154-177 |  |
| ADULT SMALL (SHORT)  | 85 - 91   | 70 - 82   | 76 - 85           | 52.0        | 154-177 |  |
| ADULT MEDIUM   | 88 - 96   | 83 - 90   | 84 - 93           | 56.0        | 154-177 |  |
| ADULT MEDIUM (SHORT)   | 88 - 96   | 83 - 90   | 84 - 93           | 55.0        | 154-177 |  |
| ADULT LARGE  | 98 - 104  | 86 - 98   | 85 - 95           | 58.0        | 154-177 |  |
| ADULT LARGE (SHORT)  | 96 - 104  | 86 - 96   | 85 - 95           | 57.0        | 154-177 |  |
| ADULT X-LARGE  | 102 - 110 | 89 - 100  | 89 - 100          | 61.0        | 164-188 |  |
| ADULT X-LARGE (SHORT)  | 102 - 110 | 89 - 100  | 89 - 100          | 60.0        | 164-188 |  |

\*All Measurements are in Centimeters. \*\*KAT Applies for all ADULT SIZES

POINT-TWO  
RANGE

# Safety Overview

Our vests provide enhanced protection to all the major thoracic and upper abdominal organs. When the rider is unseated or thrown from a horse, the pressure on the lanyard activates the CO2 canister and causes the Point-Two air vest to inflate in under 1/10 second to absorb shock, distribute pressure and support the rider's spinal column.

It also offers support to:

- Collar of the neck
- Ribs
- Coccyx
- Vital organs

It even helps to guard against crushing injuries in the event of a rotational fall. When triggered, air vests hold the rider tight for 15-20 seconds and then slowly deflate over 2-3 minutes. While the jacket is inflated, the rider will continue to have full movement of their waist, arms and legs, and partial movement of the head.

Our jackets have been rigorously assessed by leading test facilities across the UK and in Europe to obtain the required safety certificates, and in some cases have exceeded those exacting standards.

### Spine Defence

The Point-Two air vest worn alone provides approximately 45% more protection for the lower spine than a Level 3 body protector alone.

### Reduce Organ Damage

Reduces the risk of rib fractures and underlying organ damage, by as much as 20%, with or without a traditional body protector.

### Chest Impact

In a test scenario (see [www.point-two.co.uk](http://www.point-two.co.uk) for details) the Point-Two air jacket reduced levels of chest compression seen in severe chest impact by more than 55% of those seen during an unprotected fall resulting in a chest impact.

### Optimum Protection

Point-Two recommends that the ProAir is worn with a traditional body protector for optimal protection.

### CE-Marked

Certified under European Personal Protective Equipment (PPE) legislation.

The Point-Two air jacket almost eliminates the risk of severe and life threatening chest injury for a horse fall resulting in a severe chest impact (in this particular test scenario).



# ProAir

- The straps are adjustable on both sides for a more customizable fit.
- Every jacket has a level 1 foam pad behind the trigger and on the opposite side for extra coverage.
- There is also a pocket for a foam pad at the back, giving you the option to add even more spine protection.



# Soft Shell

By popular demand, we have created an air jacket that is discreet, stylish and versatile for virtually any activity. The Point-Two Soft Shell is identical to any other soft shell jacket with one major difference - it has the Point-Two airbag integrated into the jacket. A great safety alternative for riders who simply want to look stylish.

Now with a removable airbag liner for the convenience of easy washing at home.

The finest British engineering

New pleat neck for extra comfort and protection

Level 1 foam for additional protection

Inflation speed now 20% faster

Simple bayonet trigger system

INFLATION TIME  
MAXIMUM  
0.080  
sec

Release valve for fast deflation



## Point-Two Canisters

Replacement or extra canister that fits your Point-Two air jacket. Canisters are available as 50cc or 60cc. Please ensure you select the correct one for your jacket type.

- The 60cc canisters fit: Adult ProAir S, M, L, XL / Child ProAir L / P2RS Adult XS, S, M, L, XL / PointTwo Model D.
- The 50cc canisters fit: Child ProAir M, S / Child Hybrid XL / Hippios (all sizes).
- There are two fitment types - SCREW fitting and BAYONET fitting.
- All jackets supplied before 1 October 2012 will be the screw fitting type.



## Foam Back Pad

For additional spine protection – fits ProAir and Hunter models post 2012 - Meets EN 1621-2 standard.



## Saddle Attachment

Adjustable nylon stirrup strap that loops between the stirrup hooks - complete with 'D' ring.



## Bungee Lanyard



*"The P2-RS is comfortable and much more convenient than using an air jacket and body protector separately. I feel safe in a Point-Two."*

**Oliver Townend**  
International Event Rider

Ed Creamer  
Dressage Rider  
#alwaysstridefree







To find your local supplier contact us:

**01403 759659**

**KM Elite Products**

**[orders@kmeliteproducts.com](mailto:orders@kmeliteproducts.com)**

**[www.kmeliteproducts.co.uk](http://www.kmeliteproducts.co.uk)**

follow us 